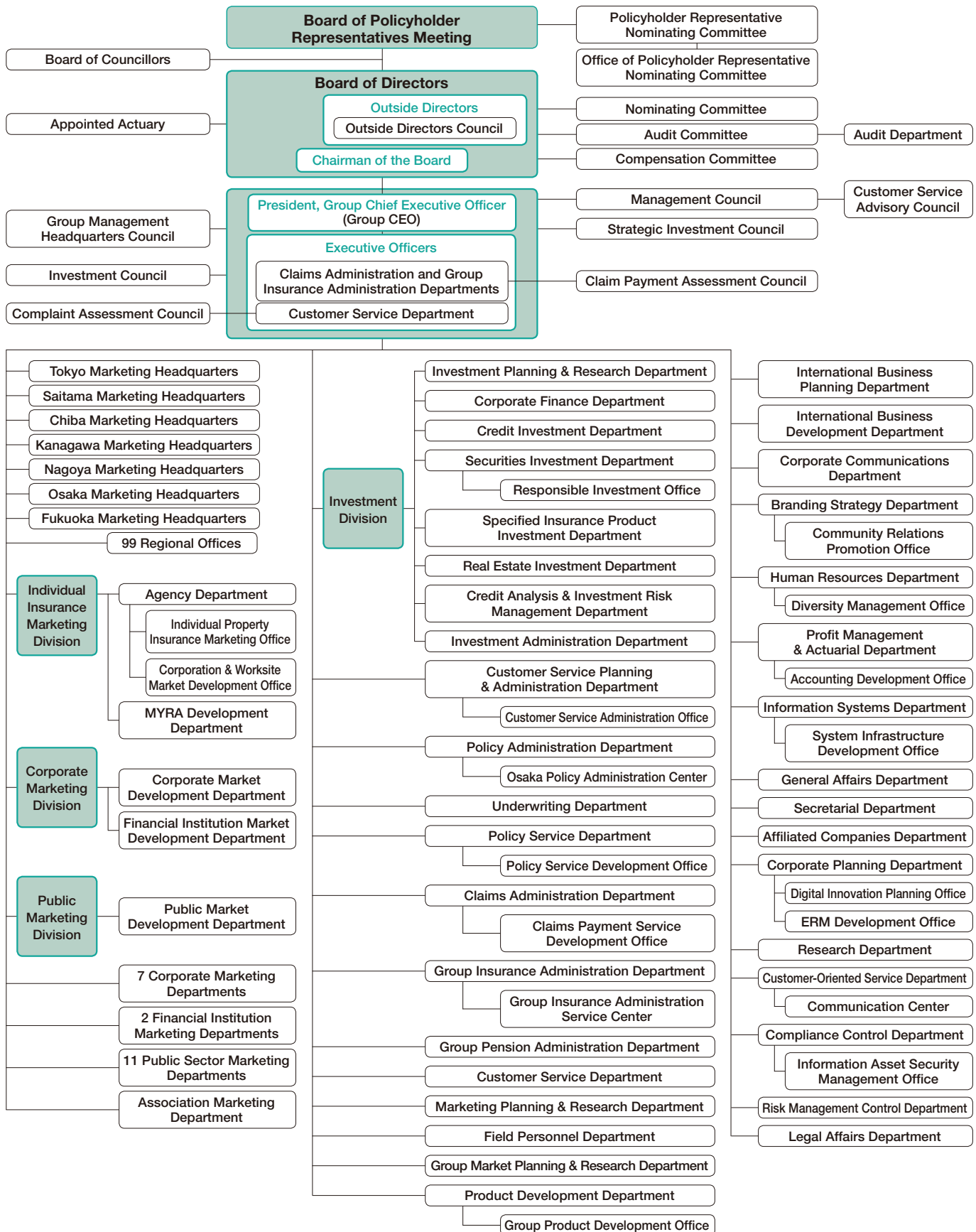


# Company Information

Company Organization .....	106
Sources of Foundation Funds / Status of Employees .....	107
Domestic Subsidiaries, Affiliates and Others .....	108
Overseas Subsidiaries, Affiliates and Others .....	109



## Sources of Foundation Funds

(As of March 31, 2020)

Contributors	Size of Contribution	
	Amounts Contributed (millions of yen)	Proportion (%)
Meiji Yasuda Life 2016 Fund Special Purpose Company, Ltd.	100,000	40.00
Meiji Yasuda Life 2017 Fund Special Purpose Company, Ltd.	50,000	20.00
Meiji Yasuda Life 2018 Fund Special Purpose Company, Ltd.	50,000	20.00
Meiji Yasuda Life 2019 Fund Special Purpose Company, Ltd.	50,000	20.00

Note: All four of the above listed funds have issued special corporate bonds, backed by claims on the funds. Proceeds from bond issuance are used to purchase claims on the funds. The Company has not made investments in any of these special purpose companies.

## Status of Employees

As of and years ended March 31,	Total Employees		New Recruits		2020	
	2019	2020	2019	2020	Average age	Average length of service
Permanent staff	10,506	10,676	302	327	44 years, 8 months	16 years, 5 months
Male	4,438	4,473	134	174	44 years, 10 months	21 years, 3 months
Female	6,068	6,203	168	153	44 years, 7 months	12 years, 11 months
Sales personnel	32,444	33,000	5,920	5,860	47 years, 3 months	10 years, 5 months
Male	6	6	0	0	74 years, 3 months	46 years, 9 months
Female	32,438	32,994	5,920	5,860	47 years, 3 months	10 years, 5 months

Notes: 1. The scope of the total employees (permanent staff) excludes those seconded to external companies, those taking long-term leave and those dedicated to service for labor unions.  
2. New recruits (permanent staff) indicates the number of new employees who joined the Company immediately after graduation (sum of "nationwide career track employees" and "region-specific career track employees").

## Reference: Status of Employees (Consolidated Basis)

As of March 31,	Total Employees	
	2019	2020
Permanent staff	15,372	15,385
Sales personnel	32,444	33,000

## Consolidated Subsidiaries

Company name	Main business site	Capital (millions of yen)	Establishment	Principal business	Proportion of voting rights held by Meiji Yasuda Life (%)	Proportion of voting rights held by Meiji Yasuda Life's subsidiaries (%)	Relationships with Meiji Yasuda Life
Meiji Yasuda General Insurance Co., Ltd.	Chiyoda-ku, Tokyo	10,000	August 8, 1996	Nonlife insurance (property and casualty)	100.0	0.0	<ul style="list-style-type: none"> <li>One of whose directors/officers concurrently serves as the Company's officer</li> <li>The Company serves as a nonlife insurance agency for this subsidiary</li> <li>A tenant of a building owned by the Company</li> </ul>
Meiji Yasuda Asset Management Company Ltd.	Minato-ku, Tokyo	1,000	November 15, 1986	Investment advisory and agency business, investment management business and "Type II Financial Instruments Business"	92.9	0.0	<ul style="list-style-type: none"> <li>Commissioned by the Company to provide investment advisory services</li> </ul>
Meiji Yasuda System Technology Company Limited	Koto-ku, Tokyo	100	April 1, 1982	Development, operation and management of systems; consulting service; services related to nursing care	100.0	0.0	<ul style="list-style-type: none"> <li>One of whose directors/officers concurrently serves as the Company's officer</li> <li>Commissioned by the Company to provide such services as system development</li> <li>A tenant of a building owned by the Company</li> </ul>

## Others

Company name	Main business site	Capital or Investment (millions of yen)	Establishment	Principal business	Proportion of voting rights held by Meiji Yasuda Life (%)	Proportion of voting rights held by Meiji Yasuda Life's subsidiaries (%)
Meiji Yasuda Insurance Service Company, Limited	Shinjuku-ku, Tokyo	30	April 5, 1984	Insurance agency	100.0	0.0
Meiji Yasuda Real Estate Management Company Limited	Shinagawa-ku, Tokyo	10	May 1, 1963	Building management	100.0	0.0
Meiji Yasuda Life Planning Center Company, Limited	Toshima-ku, Tokyo	10	November 10, 1978	Insurance-related clerical work; insurance agency; survey and research regarding life planning; consulting service	100.0	0.0
MYJ Co., Ltd.	Koto-ku, Tokyo	100	April 1, 1987	Accounting and record keeping related to policyholder services; life insurance contract confirmation; packaging and distribution; insurance agency; clerical work related to employee benefit programs	100.0	0.0
Meijiyasuda Business Plus Co., Ltd.	Koto-ku, Tokyo	80	June 1, 2017	Preparation, printing, binding and distribution of documents, business forms and other printed materials as well as administrative operations associated with employee benefit programs	100.0	0.0
Meiji Yasuda Trading Company, Limited	Koto-ku, Tokyo	10	April 1, 1975	Brokerage of goods, sale of goods, administrative operations associated with employee benefit programs, printing and book binding	100.0	0.0
Meiji Yasuda Payment Collection Business Services Co., Ltd.	Koto-ku, Tokyo	10	April 1, 2019	Payment collection	100.0	0.0
Meiji Yasuda Research Institute, Inc.	Chiyoda-ku, Tokyo	85	July 1, 1991	Survey, research and consulting regarding healthcare, cutting-edge technologies, life planning and social security systems	100.0	0.0
Sunvenus Tachikawa Company Limited	Tachikawa City, Tokyo	10	December 1, 1987	Operation of private nursing home	100.0	0.0
Diamond Athletics, Ltd.	Minato-ku, Tokyo	50	July 1, 1983	Operation of athletic clubs	35.0	0.0
RP Alpha Tokutei Mokuteki Kaisha	Chuo-ku, Tokyo	15,210	August 7, 2001	Real estate and related investment	—	—
MST Insurance Service Co., Ltd.	Shinjuku-ku, Tokyo	1,010	October 1, 2003	Insurance agency	16.1	0.0
The Mitsubishi Asset Brains Company, Limited	Minato-ku, Tokyo	480	December 25, 1998	Research and evaluation of investment trusts; investment advisory and agency business; investment management business	25.0	0.0
KSP COMMUNITY, Inc.	Kawasaki City, Kanagawa	20	October 25, 1988	Management of Kanagawa Science Park Building	10.0	8.5
Japan Pension Service Co., Ltd.	Osaka City, Osaka	2,000	April 1, 1988	Clerical work and system development related to corporate pensions	39.7	0.0

Notes: 1. MYJ Co., Ltd. was renamed Meiji Yasuda Office Partners Co., Ltd. as of April 1, 2020.  
 2. Meiji Yasuda Research Institute, Inc. began conducting survey and research regarding the economic field as of April 1, 2020.  
 3. Meiji Yasuda Trading Company, Limited began handling the event support business as of April 1, 2020.

## Consolidated Subsidiaries

Company name	Main business site	Capital	Establishment	Principal business	Proportion of voting rights held by Meiji Yasuda Life (%)	Proportion of voting rights held by Meiji Yasuda Life's subsidiaries (%)	Relationships with Meiji Yasuda Life
Pacific Guardian Life Insurance Company, Limited	Honolulu, Hawaii, U.S.A.	USD 6.35 million	August 3, 1961	Life and health insurance	100.0	0.0	One of whose directors/officers concurrently serves as the Company's officer
StanCorp Financial Group, Inc.	Portland, Oregon, U.S.A.	USD 4,950 million	September 23, 1998	Life insurance and insurance related-businesses	100.0	0.0	Two of whose directors/officers concurrently serve as the Company's officers
Meiji Yasuda America Incorporated	New York, New York, U.S.A.	USD 42.66 million	August 3, 1998	Real estate investment in the United States and financial and economic research	100.0	0.0	—

## Equity-Method Affiliates

Company name	Main business site	Capital	Establishment	Principal business	Proportion of voting rights held by Meiji Yasuda Life (%)	Proportion of voting rights held by Meiji Yasuda Life's subsidiaries (%)	Relationships with Meiji Yasuda Life
Founder Meiji Yasuda Life Insurance Co., Ltd.	Shanghai, China	CNY 2,880 million	November 28, 2002	Life insurance	29.2	0.0	One of whose directors/officers concurrently serves as the Company's officer
PT AVRIST Assurance	Jakarta, Indonesia	IDR 4.5 billion	May 19, 1975	Life insurance	29.9	0.0	—
Towarzystwo Ubezpieczeń EUROPA Spółka Akcyjna (TU Europa S.A.)	Wrocław, Poland	PLN 37.8 million	November 28, 1994	Nonlife insurance	33.5	0.0	—
Towarzystwo Ubezpieczeń i Reasekuracji WARTA Spółka Akcyjna (TUiR Warta S.A.)	Warsaw, Poland	PLN 187.938 million	September 3, 1920	Nonlife insurance	24.3	0.0	—
Thai Life Insurance Public Company Limited	Bangkok, Thailand	THB 10.6 billion	January 22, 1942	Life insurance	15.0	0.0	One of whose directors/officers concurrently serves as the Company's officer

## Others

Company name	Main business site	Capital	Establishment	Principal business	Proportion of voting rights held by Meiji Yasuda Life (%)	Proportion of voting rights held by Meiji Yasuda Life's subsidiaries (%)
Meiji Yasuda Europe Limited	London, UK	GBP 4 million	August 10, 1987	Financial and economic research, and customer development assistance in financing business	100.0	0.0
Meiji Yasuda Asia Limited	Hong Kong, China	USD 3 million	December 17, 2001	Brokerage of insurance products, financial and economic research	100.0	0.0

Notes: 1. Equity stakes were acquired in Pacific Guardian Life Insurance Company, Limited (March 1976), StanCorp Financial Group, Inc. (March 2016), Founder Meiji Yasuda Life Insurance Co., Ltd. (December 2010), PT AVRIST Assurance (November 2010), Towarzystwo Ubezpieczeń EUROPA Spółka Akcyjna (June 2012), Towarzystwo Ubezpieczeń i Reasekuracji WARTA Spółka Akcyjna (July 2012) and Thai Life Insurance Public Company Limited (November 2013).

2. The status of the subsidiaries of Meiji Yasuda Life's overseas subsidiaries and affiliates follows:

- StanCorp Financial Group, Inc.: Nine subsidiaries (Meiji Yasuda Life's subsidiaries)
- Pacific Guardian Life Insurance Company, Limited: One subsidiary (Meiji Yasuda Life's subsidiary)
- Meiji Yasuda America Incorporated: Two subsidiaries (Meiji Yasuda Life's subsidiaries)
- PT AVRIST Assurance: Two subsidiaries (Meiji Yasuda Life's affiliates)
- Towarzystwo Ubezpieczeń EUROPA Spółka Akcyjna: One subsidiary (Meiji Yasuda Life's affiliate)
- Towarzystwo Ubezpieczeń i Reasekuracji WARTA Spółka Akcyjna: One subsidiary (Meiji Yasuda Life's affiliate)