

# Company Information

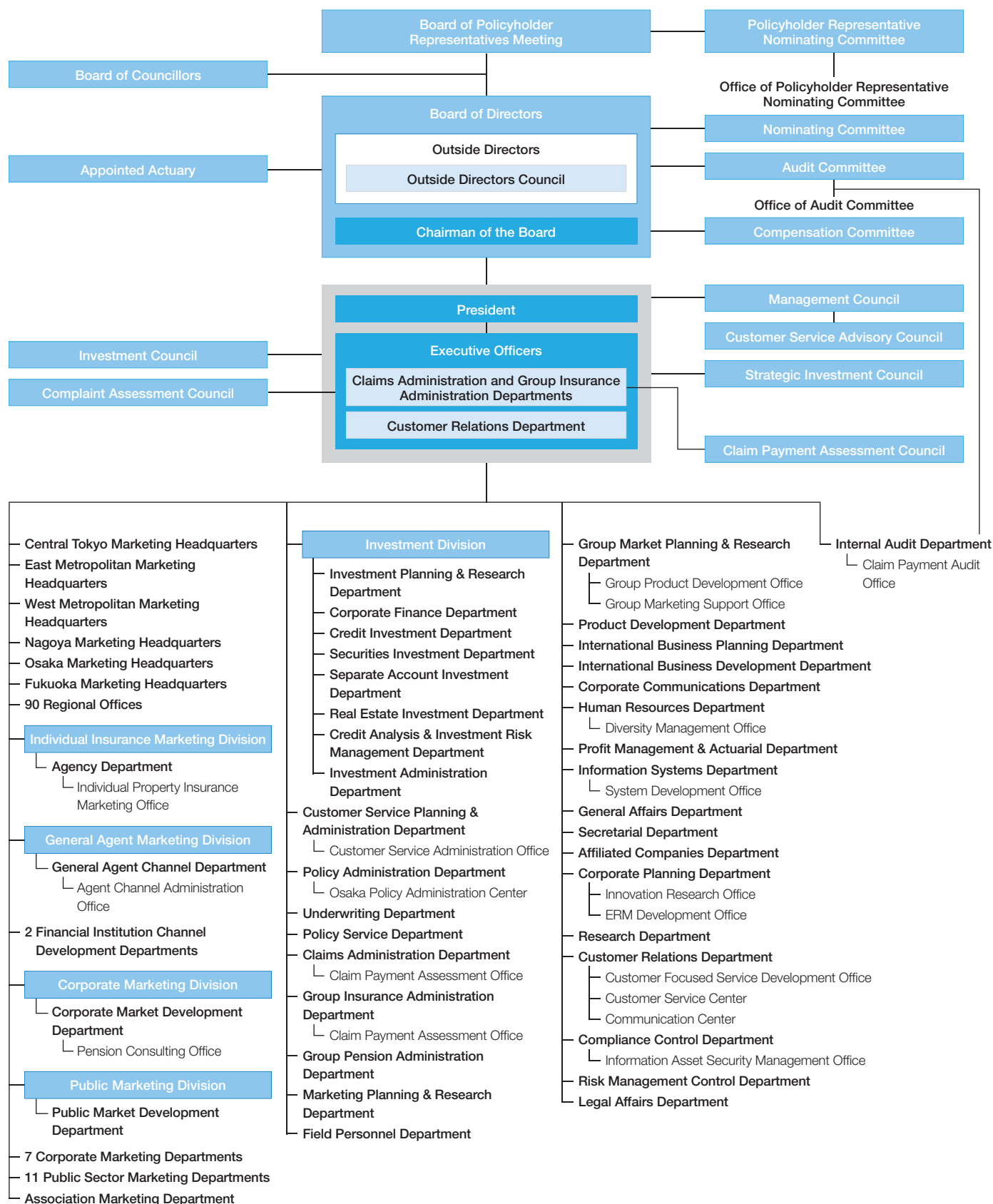
## Contents

---

Company Organization	107
Sources of Foundation Funds / Status of Employees	108
Domestic Subsidiaries, Affiliates and Others	109
Overseas Subsidiaries, Affiliates and Others	111

# Company Organization

(As of July 3, 2018)



## Sources of Foundation Funds / Status of Employees

### Contributors

(As of March 31, 2018)

Contributors	Size of Contribution	
	Amounts Contributed (millions of yen)	Proportion (%)
Meiji Yasuda Life 2016 Fund Special Purpose Company, Ltd.	100,000	38.46
Meiji Yasuda Life 2014 Fund Special Purpose Company, Ltd.	60,000	23.08
Meiji Yasuda Life 2013 Fund Special Purpose Company, Ltd.	50,000	19.23
Meiji Yasuda Life 2017 Fund Special Purpose Company, Ltd.	50,000	19.23

Note: Meiji Yasuda Life 2013 Fund Special Purpose Company, Ltd., Meiji Yasuda Life 2014 Fund Special Purpose Company, Ltd., Meiji Yasuda Life 2016 Fund Special Purpose Company, Ltd. and Meiji Yasuda Life 2017 Fund Special Purpose Company, Ltd. have issued special corporate bonds, backed by claims on the funds. Proceeds from bond issuance are used to purchase claims on the funds. The Company has not made investments in any of these special purpose companies.

### Status of Employees

As of and years ended March 31,	Total Employees		New Recruits		2018	
	2017	2018	2017	2018	Average age	Average length of service
Permanent staff	10,451	10,485	290	275	44 years, 0 month	16 years, 1 month
Male	4,439	4,442	131	139	44 years, 1 month	20 years, 6 months
Female	6,012	6,043	159	136	43 years, 11 months	12 years, 10 months
Sales personnel	31,421	31,776	5,327	5,660	47 years, 4 months	10 years, 7 months
Male	7	7	0	0	74 years, 1 month	43 years, 5 months
Female	31,414	31,769	5,327	5,660	47 years, 4 months	10 years, 7 months

Notes: 1. The scope of the total employees (permanent staff) excludes those seconded to external companies, those taking long-term leave and those dedicated to service for labor unions.

2. New recruits (permanent staff) indicates the number of new employees who joined the Company immediately after graduation.

### Reference: Status of Employees (Consolidated Basis)

As of March 31,	Total Employees	
	2017	2018
Permanent staff	15,220	15,360
Sales personnel	31,421	31,776

## Domestic Subsidiaries, Affiliates and Others

(As of March 31, 2018)

### Consolidated Subsidiaries

Company name	Main business site	Capital (millions of yen)	Establishment	Principal business	Proportion of voting rights held by Meiji Yasuda Life (%)	Proportion of voting rights held by Meiji Yasuda Life's subsidiaries (%)	Relationships with Meiji Yasuda Life
Meiji Yasuda General Insurance Co., Ltd.	Chiyoda-ku, Tokyo	52,000	August 8, 1996	Nonlife insurance (property and casualty)	100.0	0.0	<ul style="list-style-type: none"> <li>Three of whose directors/officers concurrently serve as the Company's officers</li> <li>The Company serves as a nonlife insurance agency for this subsidiary</li> <li>A tenant of a building owned by the Company</li> </ul>
Meiji Yasuda Asset Management Company Ltd.	Minato-ku, Tokyo	1,000	November 15, 1986	Investment advisory and agency business, investment management business and "Type II Financial Instruments Business"	92.9	0.0	<ul style="list-style-type: none"> <li>Two of whose directors/officers concurrently serve as the Company's officers</li> <li>Commissioned by the Company to provide investment advisory services</li> </ul>
Meiji Yasuda System Technology Company Limited	Koto-ku, Tokyo	100	April 1, 1982	Development, operation and management of systems; consulting service; payment collection; services related to nursing care and disease prevention	31.1	41.3	<ul style="list-style-type: none"> <li>One of whose directors/officers concurrently serves as the Company's officer</li> <li>Commissioned by the Company to provide such services as system development</li> <li>A tenant of a building owned by the Company</li> </ul>

### Others

Company name	Main business site	Capital or Investment (millions of yen)	Establishment	Principal business	Proportion of voting rights held by Meiji Yasuda Life (%)	Proportion of voting rights held by Meiji Yasuda Life's subsidiaries (%)
Meiji Yasuda Insurance Service Company, Limited	Shinjuku-ku, Tokyo	30	April 5, 1984	Insurance agency	100.0	0.0
Meiji Capital 9th Investment Partnership	Chiyoda-ku, Tokyo	191 (Investment)	May 22, 2008	Investment in unlisted companies and management of invested capital	—	—
RP Alpha Tokutei Mokuteki Kaisha	Chuo-ku, Tokyo	15,210	August 7, 2001	Real estate and related investment	—	—
Meiji Yasuda Real Estate Management Company Limited	Shinagawa-ku, Tokyo	10	May 1, 1963	Building management	100.0	0.0
Meiji Yasuda Life Planning Center Company, Limited	Toshima-ku, Tokyo	10	November 10, 1978	Insurance-related clerical work; insurance agency; survey and research regarding life planning; consulting service	100.0	0.0
MYJ Co., Ltd.	Koto-ku, Tokyo	100	April 1, 1987	Accounting and record keeping related to policyholder services; life insurance contract confirmation; printing, book binding, packaging and distribution; insurance agency; clerical work related to employee benefit programs	100.0	0.0
Diamond Athletics, Ltd.	Minato-ku, Tokyo	50	July 1, 1983	Operation of athletic clubs	35.0	0.0
Meiji Yasuda Institute of Life and Wellness, Inc.	Chiyoda-ku, Tokyo	25	July 1, 1991	Survey, research and consulting regarding pension plans, healthcare, medical care, nursing care and life planning aimed at promoting wellness in an aging society	50.0	41.0
Sunvenus Tachikawa Company Limited	Tachikawa City, Tokyo	490	December 1, 1987	Operation of private nursing home	100.0	0.0
Meiji yasuda Business Plus Co., Ltd.	Koto-ku, Tokyo	80	June 1, 2017	Preparation, printing, binding and distribution of documents, business forms and other printed materials as well as administrative operations associated with employee benefit programs	100.0	0.0
Meiji Yasuda Trading Company, Limited	Taito-ku, Tokyo	10	April 1, 1975	Brokerage of goods, sale of goods and administrative operations associated with employee benefit programs	100.0	0.0
MST Insurance Service Co., Ltd.	Shinjuku-ku, Tokyo	1,010	October 1, 2003	Insurance agency	16.1	0.0
Yasuda Enterprise Development Co., Ltd.	Chiyoda-ku, Tokyo	100	December 17, 1996	Venture capital	50.0	0.0
The Mitsubishi Asset Brains Company, Limited	Minato-ku, Tokyo	480	December 25, 1998	Research and evaluation of investment trusts; investment advisory and agency business	25.0	0.0
KSP COMMUNITY, Inc.	Kawasaki City, Kanagawa	20	October 25, 1988	Management of Kanagawa Science Park Building	10.0	8.5
Japan Pension Service Co., Ltd.	Osaka City, Osaka	2,000	April 1, 1988	Clerical work and system development related to corporate pensions	39.7	0.0

Notes: 1. In addition to those listed above, Meiji Yasuda Life's subsidiaries include THE YASUDA ENTERPRISE DEVELOPMENT IV, LIMITED PARTNERSHIP, which is under liquidation procedures as of March 31, 2018.

2. The investment amount in Meiji Capital 9th Investment Partnership represents the figure as of December 31, 2017.

## Reference: Foundations

Foundation name	Main business site	Capital endowment (millions of yen)	Establishment	Principal function
Meiji Yasuda Life Foundation of Health and Welfare	Shinjuku-ku, Tokyo	250	June 6, 1962	Surveys and research aimed at contributing to health promotion, development and provision of services aimed at supporting health maintenance, and assistance to younger researchers
Meiji Yasuda Mental Health Foundation	Toshima-ku, Tokyo	460	March 26, 1965	Assistance with research in the child psychiatry and psychology fields, expert counseling addressing the upbringing of children with development issues or disabilities, psychological counseling and the provision of training sessions
The Meiji Yasuda Cultural Foundation	Shinjuku-ku, Tokyo	1,520	June 10, 1991	Fostering artists and other human resources in the field of music; the maintenance of cultural traditions, including nurturing successors, to ensure the preservation of these traditions
Meiji Yasuda Health Development Foundation	Shinjuku-ku, Tokyo	3	December 1, 2016	Provision of health checkups, surveys and research aimed at improving public hygiene, circulation of expertise to raise the public's health awareness, and assistance to organizations engaging in health promotion surveys and research

## Overseas Subsidiaries, Affiliates and Others

(As of March 31, 2018)

### Consolidated Subsidiaries

Company name	Main business site	Capital	Establishment	Principal business	Proportion of voting rights held by Meiji Yasuda Life (%)	Proportion of voting rights held by Meiji Yasuda Life's subsidiaries (%)	Relationships with Meiji Yasuda Life
Pacific Guardian Life Insurance Company, Limited	Honolulu, Hawaii, U.S.A.	USD 6.35 million	August 3, 1961	Life and health insurance	100.0	0.0	One of whose directors/officers concurrently serves as the Company's officer
StanCorp Financial Group, Inc.	Portland, Oregon, U.S.A.	USD 4,950 million	September 23, 1998	Life insurance and insurance related-businesses	100.0	0.0	One of whose directors/officers concurrently serves as the Company's officer
Meiji Yasuda America Incorporated	New York, New York, U.S.A.	USD 42.66 million	August 3, 1998	Real estate investment in the United States and financial and economic research	100.0	0.0	—

### Equity-Method Affiliates

Company name	Main business site	Capital	Establishment	Principal business	Proportion of voting rights held by Meiji Yasuda Life (%)	Proportion of voting rights held by Meiji Yasuda Life's subsidiaries (%)	Relationships with Meiji Yasuda Life
Founder Meiji Yasuda Life Insurance Co., Ltd.	Shanghai, China	CNY 1,930 million	November 28, 2002	Life insurance	29.2	0.0	Two of whose directors/officers concurrently serve as the Company's officers
PT AVRIST Assurance	Jakarta, Indonesia	IDR 4.5 billion	May 19, 1975	Life insurance	29.9	0.0	—
Towarzystwo Ubezpieczeń EUROPA Spółka Akcyjna (TU Europa S.A.)	Wroclaw, Poland	PLN 37.8 million	November 28, 1994	Nonlife insurance	33.5	0.0	—
Towarzystwo Ubezpieczeń i Reasekuracji WARTA Spółka Akcyjna (TUIR Warta S.A.)	Warsaw, Poland	PLN 187.938 million	September 3, 1920	Nonlife insurance	24.3	0.0	—
Thai Life Insurance Public Company Limited	Bangkok, Thailand	THB 10.6 billion	January 22, 1942	Life insurance	15.0	0.0	One of whose directors/officers concurrently serves as the Company's officer

### Others

Company name	Main business site	Capital	Establishment	Principal business	Proportion of voting rights held by Meiji Yasuda Life (%)	Proportion of voting rights held by Meiji Yasuda Life's subsidiaries (%)
Meiji Yasuda Europe Limited	London, UK	GBP 4 million	August 10, 1987	Financial and economic research, and customer development assistance in financing business	100.0	0.0
Meiji Yasuda Asia Limited	Hong Kong, China	USD 3 million	December 17, 2001	Brokerage of insurance products, investment advisory, investment management, financial and economic research, customer development assistance in financing business	100.0	0.0

Notes: 1. Equity stakes were acquired in Pacific Guardian Life Insurance Company, Limited (March 1976), StanCorp Financial Group, Inc. (March 2016), Founder Meiji Yasuda Life Insurance Co., Ltd. (December 2010), PT AVRIST Assurance (November 2010), Towarzystwo Ubezpieczeń EUROPA Spółka Akcyjna (June 2012), Towarzystwo Ubezpieczeń i Reasekuracji WARTA Spółka Akcyjna (July 2012) and Thai Life Insurance Public Company Limited (November 2013).

2. The status of the subsidiaries of Meiji Yasuda Life's overseas subsidiaries and affiliates follows:

- StanCorp Financial Group, Inc.: Ten subsidiaries (nine of which are Meiji Yasuda Life's subsidiaries, with another being Meiji Yasuda Life's affiliate)
- Meiji Yasuda America Incorporated: Two subsidiaries (Meiji Yasuda Life's subsidiaries)
- PT AVRIST Assurance: Two subsidiaries (Meiji Yasuda Life's affiliates)
- Towarzystwo Ubezpieczeń EUROPA Spółka Akcyjna: Three subsidiaries (Meiji Yasuda Life's affiliates)
- Towarzystwo Ubezpieczeń i Reasekuracji WARTA Spółka Akcyjna: One subsidiary (Meiji Yasuda Life's affiliate)

