

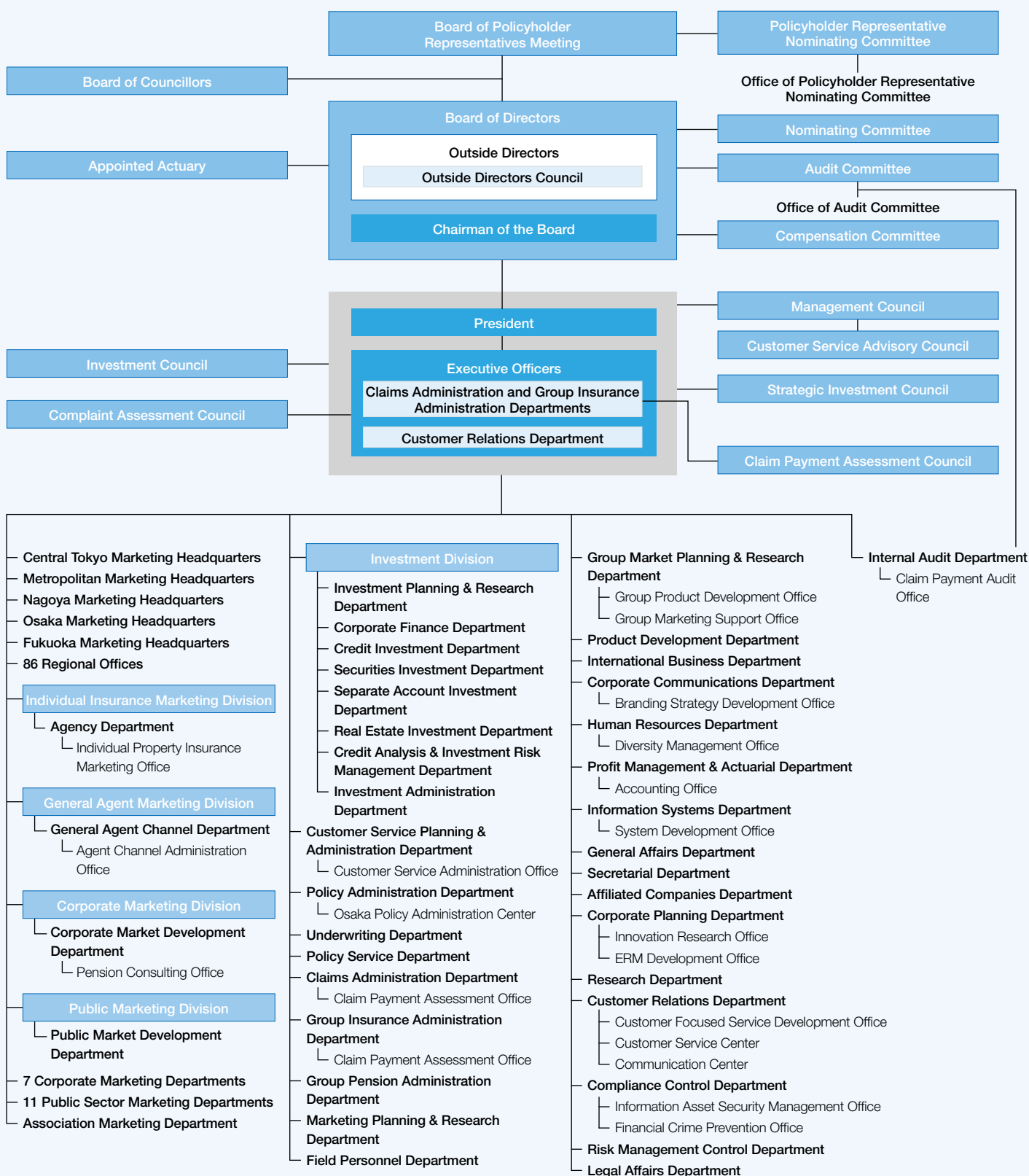
Company Information

Contents

Company Organization	72
Sources of Foundation Funds / Status of Employees	73
Directors, Executive Officers and Operating Officers	74
Domestic Subsidiaries, Affiliates and Others	76
Overseas Subsidiaries, Affiliates and Others	78

Company Organization

(As of July 4, 2017)



Sources of Foundation Funds / Status of Employees

Contributors

(As of March 31, 2017)

Contributors	Size of Contribution	
	Amounts Contributed (millions of yen)	Proportion (%)
Meiji Yasuda Life 2012 Fund Special Purpose Company, Ltd.	100,000	32.26
Meiji Yasuda Life 2016 Fund Special Purpose Company, Ltd.	100,000	32.26
Meiji Yasuda Life 2014 Fund Special Purpose Company, Ltd.	60,000	19.35
Meiji Yasuda Life 2013 Fund Special Purpose Company, Ltd.	50,000	16.13

Note: Meiji Yasuda Life 2012 Fund Special Purpose Company, Ltd., Meiji Yasuda Life 2013 Fund Special Purpose Company, Ltd., Meiji Yasuda Life 2014 Fund Special Purpose Company, Ltd. and Meiji Yasuda Life 2016 Fund Special Purpose Company, Ltd. have issued special corporate bonds, backed by claims on the funds. Proceeds from bond issuance are used to purchase claims on the funds. The Company has not made investments in any of these special purpose companies.

Status of Employees

As of and years ended March 31,	Total Employees		New Recruits		2017	
	2016	2017	2016	2017	Average age	Average length of service
Permanent staff	10,514	10,451	251	290	43 years, 10 months	16 years, 0 month
Male	4,466	4,439	130	131	43 years, 10 months	20 years, 2 months
Female	6,048	6,012	121	159	43 years, 11 months	12 years, 10 months
Sales personnel	30,531	31,421	5,464	5,327	46 years, 6 months	10 years, 8 months
Male	8	7	—	—	72 years, 1 month	42 years, 5 months
Female	30,523	31,414	5,464	5,327	46 years, 6 months	10 years, 8 months

Notes: 1. The scope of the total employees (permanent staff) excludes those seconded to external companies, those taking long-term leave and those dedicated to service for labor unions.

2. New recruits (permanent staff) indicates the number of new employees who joined the Company immediately after graduation.

3. The average length of service for sales personnel includes time spent as sales personnel under consignment contracts with the Company upon reaching age 60 or thereafter.

Reference: Status of Employees (Consolidated Basis)

As of March 31,	Total Employees	
	2016	2017
Permanent staff	15,039	15,220
Sales personnel	30,531	31,421

Directors, Executive Officers and Operating Officers

(As of July 4, 2017)

Directors



Chairman of the Board
Nobuya Suzuki*



Director, President
Akio Negishi*



Director, Deputy President
Toshihiko Yamashita



Director, Deputy President
Masahiro Ifuku



Director
Kenji Kojo



Director
Shigehiko Hattori**
Senior Advisor,
Shimadzu Corporation



Director
Seiichi Ochiai**
Professor Emeritus,
the University of Tokyo



Director
Teruo Kise**
Special Advisor, TOTO LTD.



Director
Miyako Suda**
Special Advisor,
The Canon Institute for Global Studies



Director
Keiko Kitamura**
Professor Emeritus,
Chuo University



Director
Masaki Akita**
Representative Director, President and
Executive Operating Officer, Matsuya Co., Ltd.

* Representative Executive Officer
** Outside Director

Executive Officers

Senior Managing Executive Officers

Akio Sakai	Chief Executive, Public Marketing
Tadashi Onishi	
Masao Aratani	
Shinya Makino	
Tetsuo Maejima	Chief Executive, Corporate Marketing

Managing Executive Officers

Masahiko Sagara	Chief Executive, General Agent Marketing
Takashi Kikugawa	
Yasuyuki Ayai	Chief Executive, Individual Insurance Marketing
Teruki Umezaki	
Kazunori Yamauchi	
Hideki Nagashima	
Shinji Nakatani	

Executive Officer

Tsuyoshi Mizuno	
-----------------	--

Operating Officers

Managing Operating Officers

Takashi Tsunematsu	Chief General Manager, Central Tokyo Marketing Headquarters
Kazuhiko Umakoshi	Chief General Manager, Metropolitan Marketing Headquarters

Operating Officers

Michihiko Hayashi	Chief General Manager, Osaka Marketing Headquarters
Yoshiro Shimizu	Chief General Manager, Fukuoka Marketing Headquarters
Hideki Yamaguchi	Chief General Manager, Nagoya Marketing Headquarters
Shiro Kishimoto	General Manager, Compliance Control Department
Koichi Nagao	General Manager, Group Market Planning & Research Department
Atsushi Nakamura	General Manager, Corporate Planning Department
Masanao Kawamura	General Manager, Corporate Market Development Department
Masahiro Koyama	General Manager, Agency Department
Toshiyuki Sumiyoshi	General Manager, Human Resources Department
Yasushi Ueda	General Manager, Profit Management & Actuarial Department

Domestic Subsidiaries, Affiliates and Others

(As of March 31, 2017)

Consolidated Subsidiaries

Company name	Main business site	Capital (millions of yen)	Establishment	Principal business	Proportion of voting rights held by Meiji Yasuda Life (%)	Proportion of voting rights held by Meiji Yasuda Life's subsidiaries (%)	Relationships with Meiji Yasuda Life
Meiji Yasuda General Insurance Co., Ltd.	Chiyoda-ku, Tokyo	52,000	August 8, 1996	Nonlife insurance (property and casualty)	100.0	0.0	<ul style="list-style-type: none"> Two of whose directors/officers concurrently serves as the Company's officers The Company serves as a nonlife insurance agency for this subsidiary A tenant of a building owned by the Company
Meiji Yasuda Asset Management Company Ltd.	Minato-ku, Tokyo	1,000	November 15, 1986	Investment advisory and agency business, investment management business and "Type II Financial Instruments Business"	92.9	0.0	<ul style="list-style-type: none"> One of whose directors/officers concurrently serves as the Company's officer Commissioned by the Company to provide investment advisory services
Meiji Yasuda System Technology Company Limited	Koto-ku, Tokyo	100	April 1, 1982	Development, operation and management of systems; consulting service; payment collection; services related to nursing care and disease prevention	20.5	40.1	<ul style="list-style-type: none"> One of whose directors/officers concurrently serves as the Company's officer Commissioned by the Company to provide such services as system development A tenant of a building owned by the Company

Others

Company name	Main business site	Capital or Investment (millions of yen)	Establishment	Principal business	Proportion of voting rights held by Meiji Yasuda Life (%)	Proportion of voting rights held by Meiji Yasuda Life's subsidiaries (%)
Meiji Yasuda Insurance Service Company, Limited	Shinjuku-ku, Tokyo	30	April 5, 1984	Insurance agency	100.0	0.0
Meiji Capital 9th Investment Partnership	Chiyoda-ku, Tokyo	211 (Investment)	May 22, 2008	Investment in unlisted companies and management of invested capital	—	—
RP Alpha Tokutei Mokuteki Kaisha	Chuo-ku, Tokyo	15,210	August 7, 2001	Real estate and related investment	—	—
Meiji Yasuda Real Estate Management Company Limited	Shinagawa-ku, Tokyo	10	April 30, 1963	Building management	100.0	0.0
Meiji Yasuda Life Planning Center Company, Limited	Toshima-ku, Tokyo	10	November 10, 1978	Insurance-related clerical work; insurance agency; survey and research regarding life planning; consulting service	100.0	0.0
MYJ Co., Ltd.	Koto-ku, Tokyo	100	April 1, 1987	Accounting and record keeping related to policyholder services; life insurance contract confirmation; printing, book binding, packaging and distribution; insurance agency; clerical work related to employee benefit programs	100.0	0.0
Diamond Athletics, Ltd.	Minato-ku, Tokyo	50	July 1, 1983	Operation of athletic clubs	35.0	0.0
Meiji Yasuda Institute of Life and Wellness, Inc.	Chiyoda-ku, Tokyo	25	July 1, 1991	Survey, research and consulting regarding pension plans, healthcare, medical care, nursing care and life planning aimed at promoting wellness in an aging society	17.0	74.0
Sunvenus Tachikawa Company Limited	Tachikawa City, Tokyo	490	December 1, 1987	Operation of private nursing home	100.0	0.0
MST Insurance Service Co., Ltd.	Shinjuku-ku, Tokyo	1,010	October 1, 2003	Insurance agency	16.1	0.0
Yasuda Enterprise Development Co., Ltd.	Chiyoda-ku, Tokyo	100	December 17, 1996	Venture capital	50.0	0.0
The Mitsubishi Asset Brains Company, Limited	Minato-ku, Tokyo	480	December 25, 1998	Research and evaluation of investment trusts; investment advisory and agency business	25.0	0.0
THE YASUDA ENTERPRISE DEVELOPMENT IV, LIMITED PARTNERSHIP	Chiyoda-ku, Tokyo	1,087 (Investment)	January 31, 2008	Investment in unlisted companies and management of invested capital	—	—
KSP COMMUNITY, Inc.	Kawasaki City, Kanagawa	20	October 25, 1988	Management of Kanagawa Science Park Building	10.0	8.5
Japan Pension Service Co., Ltd.	Osaka City, Osaka	2,000	April 1, 1988	Clerical work and system development related to corporate pensions	39.7	0.0

Note: The investment amounts in Meiji Capital 9th Investment Partnership and THE YASUDA ENTERPRISE DEVELOPMENT IV, LIMITED PARTNERSHIP represent figures as of December 31, 2016.

Reference: Foundations Established by the Company

Foundation name	Main business site	Capital endowment (millions of yen)	Establishment	Principal function
Meiji Yasuda Life Foundation of Health and Welfare	Shinjuku-ku, Tokyo	250	June 6, 1962	Surveys and research pertaining to health promotion, development and provision of services aimed at supporting health maintenance, and assistance to younger researchers
Meiji Yasuda Mental Health Foundation	Toshima-ku, Tokyo	460	March 26, 1965	Assistance with research aimed at addressing issues regarding social welfare; operation of consulting center; provision of training programs
The Meiji Yasuda Cultural Foundation	Shinjuku-ku, Tokyo	1,520	June 10, 1991	Fostering artists and other human resources in the field of music; the maintenance of cultural traditions, including nurturing successors, to ensure the preservation of these traditions
Meiji Yasuda Health Development Foundation	Shinjuku-ku, Tokyo	3	December 1, 2016	Provision of health checkups, surveys and research into public hygiene and assistance with research pertaining to health promotion

Overseas Subsidiaries, Affiliates and Others

(As of March 31, 2017)

Consolidated Subsidiaries

Company name	Main business site	Capital	Establishment	Principal business	Proportion of voting rights held by Meiji Yasuda Life (%)	Proportion of voting rights held by Meiji Yasuda Life's subsidiaries (%)	Relationships with Meiji Yasuda Life
Pacific Guardian Life Insurance Company, Limited	Honolulu, Hawaii, U.S.A.	USD 6.35 million	August 3, 1961	Life and health insurance	100.0	0.0	One of whose directors/officers concurrently serves as the Company's officer
StanCorp Financial Group, Inc.	Portland, Oregon, U.S.A.	USD 4,950 million	September 23, 1998	Life insurance and insurance related-businesses	100.0	0.0	One of whose directors/officers concurrently serves as the Company's officer
Meiji Yasuda Realty USA Incorporated	Wilmington, Delaware, U.S.A.	USD 42.66 million	August 3, 1998	Real estate investing business in U.S.A.	100.0	0.0	—

Equity-Method Affiliates

Company name	Main business site	Capital	Establishment	Principal business	Proportion of voting rights held by Meiji Yasuda Life (%)	Proportion of voting rights held by Meiji Yasuda Life's subsidiaries (%)	Relationships with Meiji Yasuda Life
Founder Meiji Yasuda Life Insurance Co., Ltd.	Shanghai, China	CNY 1,930 million	November 28, 2002	Life insurance	29.2	0.0	Two of whose directors/officers concurrently serves as the Company's officers
PT AVRIST Assurance	Jakarta, Indonesia	IDR 4.5 billion	May 19, 1975	Life insurance	29.9	0.0	—
Towarzystwo Ubezpieczeń EUROPA Spółka Akcyjna (TU Europa S.A.)	Wroclaw, Poland	PLN 37.8 million	November 28, 1994	Nonlife insurance	33.5	0.0	—
Towarzystwo Ubezpieczeń i Reasekuracji WARTA Spółka Akcyjna (TUIR Warta S.A.)	Warsaw, Poland	PLN 187.938 million	September 3, 1920	Nonlife insurance	24.3	0.0	—
Thai Life Insurance Public Company Limited	Bangkok, Thailand	THB 10.6 billion	January 22, 1942	Life insurance	15.0	0.0	One of whose directors/officers concurrently serves as the Company's officer

Others

Company name	Main business site	Capital	Establishment	Principal business	Proportion of voting rights held by Meiji Yasuda Life (%)	Proportion of voting rights held by Meiji Yasuda Life's subsidiaries (%)
Meiji Yasuda America Incorporated	New York, New York, U.S.A.	USD 7 million	October 15, 1986	Customer development assistance in financing business, and financial and economic research	100.0	0.0
Meiji Yasuda Europe Limited	London, UK	GBP 4 million	August 10, 1987	Financial and economic research, and customer development assistance in financing business	100.0	0.0
Meiji Yasuda Asia Limited	Hong Kong, China	USD 3 million	December 17, 2001	Brokerage of insurance products, investment advisory, investment management, financial and economic research, customer development assistance in financing business	100.0	0.0

Notes: 1. Equity stakes were acquired in Pacific Guardian Life Insurance Company, Limited (March 1976), StanCorp Financial Group, Inc. (March 2016), Founder Meiji Yasuda Life Insurance Co., Ltd. (December 2010), PT AVRIST Assurance (November 2010), Towarzystwo Ubezpieczeń EUROPA Spółka Akcyjna (June 2012), Towarzystwo Ubezpieczeń i Reasekuracji WARTA Spółka Akcyjna (July 2012) and Thai Life Insurance Public Company Limited (November 2013).

2. The status of the subsidiaries of Meiji Yasuda Life's overseas subsidiaries and affiliates follows:

- StanCorp Financial Group, Inc.: Ten subsidiaries (nine of which are Meiji Yasuda Life's subsidiaries, with another being Meiji Yasuda Life's affiliate)
- Meiji Yasuda Realty USA Incorporated: Two subsidiaries (Meiji Yasuda Life's subsidiaries)
- PT AVRIST Assurance: Two subsidiaries (Meiji Yasuda Life's affiliates)
- Towarzystwo Ubezpieczeń EUROPA Spółka Akcyjna: Three subsidiaries (Meiji Yasuda Life's affiliates)
- Towarzystwo Ubezpieczeń i Reasekuracji WARTA Spółka Akcyjna: One subsidiary (Meiji Yasuda Life's affiliate)
- Thai Life Insurance Public Company Limited: One subsidiary (Meiji Yasuda Life's affiliate; under liquidation proceedings as of March 31, 2017)