

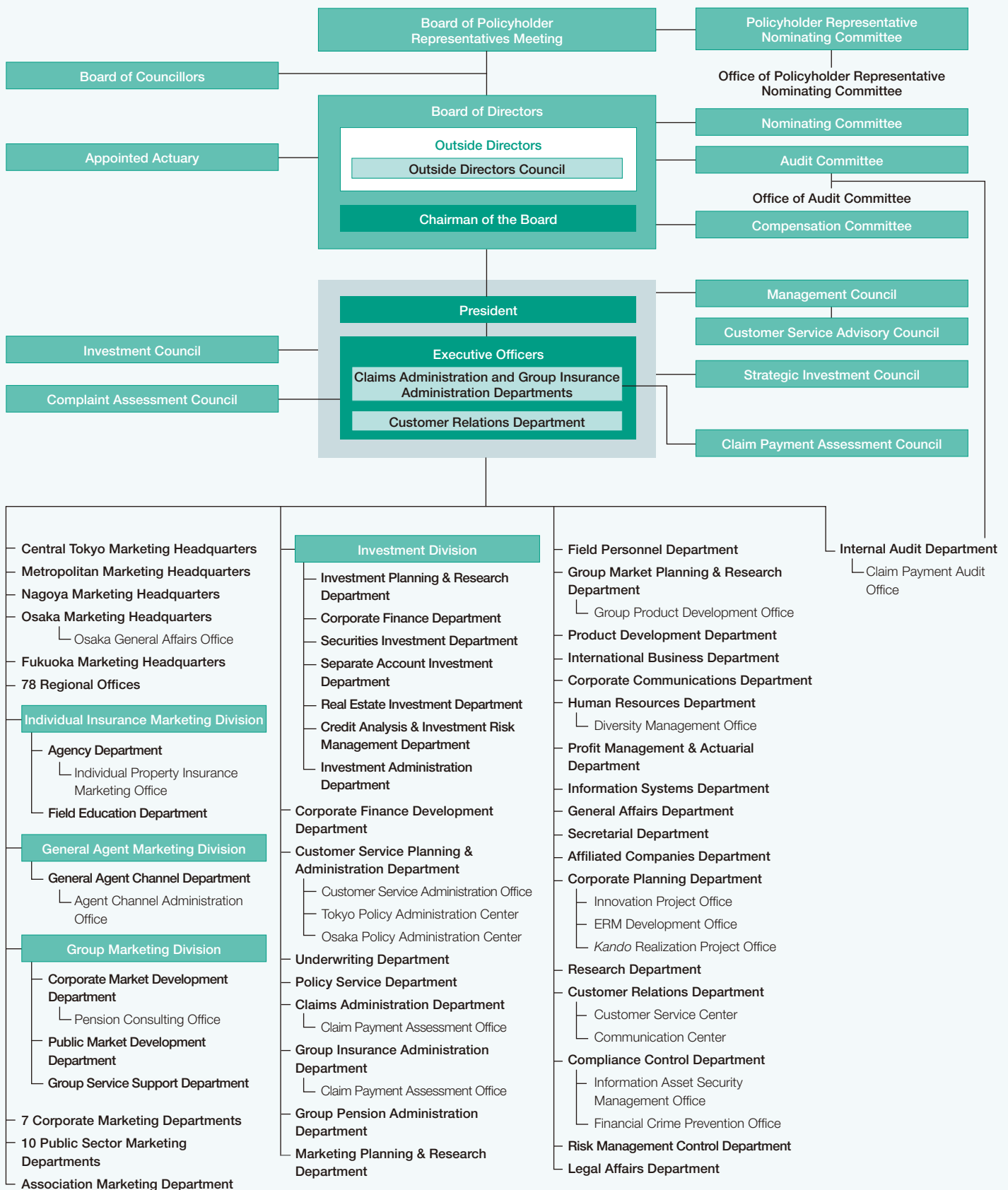
Company Information

Contents

Company Organization	56
Sources of Foundation Funds/ Status of Employees	57
Directors and Executive/ Operating Officers	58
Domestic Subsidiaries, Affiliates and Others	60
Overseas Subsidiaries, Affiliates and Others	62

Company Organization

(As of July 5, 2016)



Sources of Foundation Funds/ Status of Employees

Contributors

(As of March 31, 2016)

Contributors	Size of Contribution	
	Amounts Contributed (millions of yen)	Proportion (%)
Meiji Yasuda Life 2012 Fund Special Purpose Company, Ltd.	100,000	38.46
Meiji Yasuda Life 2014 Fund Special Purpose Company, Ltd.	60,000	23.08
Meiji Yasuda Life 2011 Fund Special Purpose Company, Ltd.	50,000	19.23
Meiji Yasuda Life 2013 Fund Special Purpose Company, Ltd.	50,000	19.23

Note: Meiji Yasuda Life 2011 Fund Special Purpose Company, Ltd., Meiji Yasuda Life 2012 Fund Special Purpose Company, Ltd., Meiji Yasuda Life 2013 Fund Special Purpose Company, Ltd. and Meiji Yasuda Life 2014 Fund Special Purpose Company, Ltd. have issued special corporate bonds, backed by claims on the funds. Proceeds from bond issuance are used to purchase claims on the funds. The Company has not made investments in any of these special purpose companies.

Status of Employees

As of and years ended March 31,	Total Employees		New Recruits		2016	
	2015	2016	2015	2016	Average age	Average length of service
Permanent staff	10,692	10,514	256	251	43 years, 9 months	15 years, 9 months
Male	4,504	4,466	136	130	43 years, 7 months	19 years, 11 months
Female	6,188	6,048	120	121	43 years, 11 months	12 years, 8 months
Sales personnel	30,101	30,531	5,839	5,464	47 years, 6 months	10 years, 8 months
Male	8	8	—	—	73 years, 0 month	41 years, 11 months
Female	30,093	30,523	5,839	5,464	47 years, 6 months	10 years, 8 months

Notes: 1. In line with changes in the Company's personnel system, the scope of total employees (permanent staff) excludes the following personnel.

As of March 31, 2015 and 2016:

Those seconded to external companies, those taking long-term leave and those dedicated to service for labor unions

2. New recruits (permanent staff) indicates the number of new employees who joined the Company immediately after graduation.

3. From March 31, 2013, the average length of service for sales personnel includes time spent as sales personnel under consignment contracts with the Company upon reaching age 60 or thereafter.

Reference: Status of Employees (Consolidated Basis)

As of March 31,	Total Employees	
	2015	2016
Permanent staff	12,315	15,039
Sales personnel	30,101	30,531

Directors and Executive/ Operating Officers

(As of July 5, 2016)

Directors



Chairman of the Board
Nobuya Suzuki*



Director, President
Akio Negishi*



Director, Deputy President
Toshihiko Yamashita



Director, Deputy President
Masahiro Ifuku



Director
Kenji Kojo



Director
Shigehiko Hattori**
Senior Advisor,
Shimadzu Corporation



Director
Seiichi Ochiai**
Professor Emeritus,
the University of Tokyo



Director
Yoshihide Munekuni**
A former Chairman of the Board,
Honda Motor Co., Ltd.



Director
Teruo Kise**
Senior Advisor, TOTO LTD.



Director
Miyako Suda**
Special Advisor,
The Canon Institute for Global Studies



Director
Keiko Kitamura**
Professor Emeritus,
Chuo University

* Representative Executive Officer
** Outside Director

Executive Officers

Senior Managing Executive Officers

Takashi Ito	Chief Executive, Individual Insurance Marketing
Kikuo Asano	
Tatsuo Ogoshi	Chief Executive, General Agent Marketing
Akio Sakai	Chief Executive, Group Marketing
Tadashi Onishi	

Managing Executive Officers

Masahiko Sagara
Masao Aratani
Shinya Makino
Tetsuo Maejima
Takashi Kikugawa
Yasuyuki Ayai
Teruki Umezaki
Kazunori Yamauchi

Operating Officers

Managing Operating Officer

Takashi Tsunematsu	Chief General Manager, Central Tokyo Marketing Headquarters
--------------------	---

Operating Officers

Kazuhiko Umakoshi	Chief General Manager, Metropolitan Marketing Headquarters
Satomi Matsumura	General Manager, Tachikawa Regional Office
Michihiko Hayashi	Chief General Manager, Osaka Marketing Headquarters
Hideki Nagashima	General Manager, Human Resources Department
Shinji Nakatani	General Manager, Group Insurance Administration Department
Tsuyoshi Mizuno	General Manager, Affiliated Companies Department
Yoshiro Shimizu	Chief General Manager, Fukuoka Marketing Headquarters
Hideki Yamaguchi	Chief General Manager, Nagoya Marketing Headquarters
Shiro Kishimoto	General Manager, Compliance Control Department
Koichi Nagao	General Manager, Group Market Planning & Research Department
Atsushi Nakamura	General Manager, Corporate Planning Department

Domestic Subsidiaries, Affiliates and Others

(As of March 31, 2016)

Consolidated Subsidiaries

Company name	Main business site	Capital or investment (millions of yen)	Establishment	Principal business	Proportion of voting rights held by Meiji Yasuda Life (%)	Proportion of voting rights held by Meiji Yasuda Life's subsidiaries (%)	Relationships with Meiji Yasuda Life
Meiji Yasuda General Insurance Co., Ltd.	Chiyoda-ku, Tokyo	52,000	August 8, 1996	Nonlife insurance (property and casualty)	100.0	0.0	<ul style="list-style-type: none"> One of whose directors/officers concurrently serves as the Company's officer The Company serves as a nonlife insurance agency for this subsidiary A tenant of a building owned by the Company
Meiji Yasuda Asset Management Company Ltd.	Minato-ku, Tokyo	1,000	November 15, 1986	Investment advisory and agency business, investment management business and "Type II Financial Instruments Business"	92.9	0.0	<ul style="list-style-type: none"> One of whose directors/officers concurrently serves as the Company's officer Commissioned by the Company to provide investment advisory services
Meiji Yasuda System Technology Company Limited	Koto-ku, Tokyo	100	April 1, 1982	Development, operation and management of systems; consulting service; payment collection; services related to nursing care and disease prevention	7.1	40.1	<ul style="list-style-type: none"> Commissioned by the Company to provide such services as system development A tenant of a building owned by the Company

Others

Company name	Main business site	Capital or investment (millions of yen)	Establishment	Principal business	Proportion of voting rights held by Meiji Yasuda Life (%)	Proportion of voting rights held by Meiji Yasuda Life's subsidiaries (%)
Meiji Yasuda Insurance Service Company, Limited	Shinjuku-ku, Tokyo	30	April 5, 1984	Insurance agency	100.0	0.0
Meiji Capital 9th Investment Partnership	Chiyoda-ku, Tokyo	270 (investment)	May 22, 2008	Investment in unlisted companies and management of invested capital	—	—
RP Alpha Tokutei Mokuteki Kaisha	Chuo-ku, Tokyo	15,210	August 7, 2001	Real estate and related investment	—	—
Meiji Yasuda Real Estate Management Company Limited	Shinagawa-ku, Tokyo	10	April 30, 1963	Building management	100.0	0.0
Meiji Yasuda Life Planning Center Company, Limited	Toshima-ku, Tokyo	10	November 10, 1978	Insurance-related clerical work; insurance agency; survey and research regarding life planning; consulting service	10.0	21.0
MYJ Co., Ltd.	Koto-ku, Tokyo	100	April 1, 1987	Accounting and record keeping related to policyholder services; life insurance contract confirmation; printing, book binding, packaging and distribution; insurance agency; clerical work related to employee benefit programs	100.0	0.0
Diamond Athletics, Ltd.	Minato-ku, Tokyo	50	July 1, 1983	Operation of athletic clubs	35.0	0.0
Meiji Yasuda Institute of Life and Wellness, Inc.	Chiyoda-ku, Tokyo	25	July 1, 1991	Survey, research and consulting regarding pension plans, healthcare, medical care, nursing care and life planning aimed at promoting wellness in an aging society	17.0	74.0
Sunvenus Tachikawa Company Limited	Tachikawa City, Tokyo	490	December 1, 1987	Operation of private nursing home	100.0	0.0
MST Insurance Service Co., Ltd.	Shinjuku-ku, Tokyo	1,010	October 1, 2003	Insurance agency	16.1	0.0
Yasuda Enterprise Development Co., Ltd.	Chiyoda-ku, Tokyo	100	December 17, 1996	Venture capital	50.0	0.0
The Mitsubishi Asset Brains Company, Limited	Minato-ku, Tokyo	480	December 25, 1998	Research and evaluation of investment trusts; investment advisory and agency business	25.0	0.0
Defined Contribution Plan Consulting of Japan Co., Ltd.	Chiyoda-ku, Tokyo	4,000	March 16, 2001	Operation and management of defined contribution pension plans	20.0	0.0
THE YASUDA ENTERPRISE DEVELOPMENT IV, LIMITED PARTNERSHIP	Chiyoda-ku, Tokyo	2,210 (investment)	January 31, 2008	Investment in unlisted companies and management of invested capital	—	—
KSP COMMUNITY, Inc.	Kawasaki City, Kanagawa	20	October 25, 1988	Management of Kanagawa Science Park Building	10.0	5.0
Japan Pension Service Co., Ltd.	Osaka City, Osaka	2,000	April 1, 1988	Clerical work and system development related to corporate pensions	39.7	0.0

Note: The investment amounts in Meiji Capital 9th Investment Partnership and THE YASUDA ENTERPRISE DEVELOPMENT IV, LIMITED PARTNERSHIP represent figures as of December 31, 2015.

Reference: Foundations Established by the Company

Foundation name	Main business site	Capital or investment (millions of yen)	Establishment	Principal function
Meiji Yasuda Life Foundation of Health and Welfare	Shinjuku-ku, Tokyo	250	June 6, 1962	Assistance with research and other activities aimed at promoting health and strengthening the physical wellbeing of the general public
Meiji Yasuda Mental Health Foundation	Toshima-ku, Tokyo	460	March 26, 1965	Assistance with research aimed at addressing issues regarding social welfare; operation of consulting center; provision of training programs
The Meiji Yasuda Cultural Foundation	Shinjuku-ku, Tokyo	1,520	June 10, 1991	Fostering artists and other human resources in the field of music; the maintenance of cultural traditions, including nurturing successors, to ensure the preservation of these traditions

Overseas Subsidiaries, Affiliates and Others

(As of March 31, 2016)

Consolidated Subsidiaries

Company name	Main business site	Capital	Establishment	Principal business	Proportion of voting rights held by Meiji Yasuda Life (%)	Proportion of voting rights held by Meiji Yasuda Life's subsidiaries (%)	Relationships with Meiji Yasuda Life
Pacific Guardian Life Insurance Company, Limited	Honolulu, Hawaii, U.S.A.	USD 6.35 million	August 3, 1961	Life and health insurance	100.0	0.0	One of whose directors/officers concurrently serves as the Company's officer
StanCorp Financial Group, Inc.	Portland, Oregon, U.S.A.	USD 4,950 million	September 23, 1998	Life insurance and insurance related-businesses	100.0	0.0	One of whose directors/officers concurrently serves as the Company's officer
Meiji Yasuda Realty USA Incorporated	Wilmington, Delaware, U.S.A.	USD 42.66 million	August 3, 1998	Real estate investing business in U.S.A.	100.0	0.0	One of whose directors/officers concurrently serves as the Company's officer

Equity-Method Affiliates

Company name	Main business site	Capital	Establishment	Principal business	Proportion of voting rights held by Meiji Yasuda Life (%)	Proportion of voting rights held by Meiji Yasuda Life's subsidiaries (%)	Relationships with Meiji Yasuda Life
Founder Meiji Yasuda Life Insurance Co., Ltd.	Shanghai, China	CNY 1,930 million	November 28, 2002	Life insurance	29.2	0.0	Three of whose directors/officers concurrently serves as the Company's officers
PT AVRIST Assurance	Jakarta, Indonesia	IDR 4.5 billion	May 19, 1975	Life insurance	29.9	0.0	One of whose directors/officers concurrently serves as the Company's officer
Towarzystwo Ubezpieczeń EUROPA Spółka Akcyjna (TU Europa S.A.)	Wroclaw, Poland	PLN 37.8 million	November 28, 1994	Nonlife insurance	33.5	0.0	—
Towarzystwo Ubezpieczeń i Reasekuracji WARTA Spółka Akcyjna (TUIR Warta S.A.)	Warsaw, Poland	PLN 187.938 million	September 3, 1920	Nonlife insurance	24.3	0.0	—
Thai Life Insurance Public Company Limited	Bangkok, Thailand	THB 10.6 billion	January 22, 1942	Life insurance	15.0	0.0	One of whose directors/officers concurrently serves as the Company's officer

Others

Company name	Main business site	Capital	Establishment	Principal business	Proportion of voting rights held by Meiji Yasuda Life (%)	Proportion of voting rights held by Meiji Yasuda Life's subsidiaries (%)
Meiji Yasuda America Incorporated	New York, New York, U.S.A.	USD 7 million	October 15, 1986	Customer development assistance in financing business, and financial and economic research	100.0	0.0
Meiji Yasuda Europe Limited	London, UK	GBP 4 million	August 10, 1987	Financial and economic research, and customer development assistance in financing business	100.0	0.0
Meiji Yasuda Asia Limited	Hong Kong, China	USD 3 million	December 17, 2001	Brokerage of insurance products, investment advisory, investment management, financial and economic research, customer development assistance in financing business	100.0	0.0

Notes: 1. Equity stakes were acquired in Pacific Guardian Life Insurance Company, Limited (March 1976), StanCorp Financial Group, Inc. (March 2016), Founder Meiji Yasuda Life Insurance Co., Ltd. (December 2010), PT AVRIST Assurance (November 2010), Towarzystwo Ubezpieczeń EUROPA Spółka Akcyjna (June 2012), Towarzystwo Ubezpieczeń i Reasekuracji WARTA Spółka Akcyjna (July 2012) and Thai Life Insurance Public Company Limited (November 2013).

2. The status of the subsidiaries of Meiji Yasuda Life's overseas subsidiaries and affiliates follows:

- StanCorp Financial Group, Inc.: Ten subsidiaries (nine of which are Meiji Yasuda Life's subsidiaries, with another being Meiji Yasuda Life's affiliate)
- Meiji Yasuda Realty USA Incorporated: Two subsidiaries (Meiji Yasuda Life's subsidiaries)
- PT AVRIST Assurance: Two subsidiaries (Meiji Yasuda Life's affiliates)
- Towarzystwo Ubezpieczeń EUROPA Spółka Akcyjna: Four subsidiaries (Meiji Yasuda Life's affiliate)
- Towarzystwo Ubezpieczeń i Reasekuracji WARTA Spółka Akcyjna: One subsidiary (Meiji Yasuda Life's affiliate)
- Thai Life Insurance Public Company Limited: One subsidiary (Meiji Yasuda Life's affiliate)