

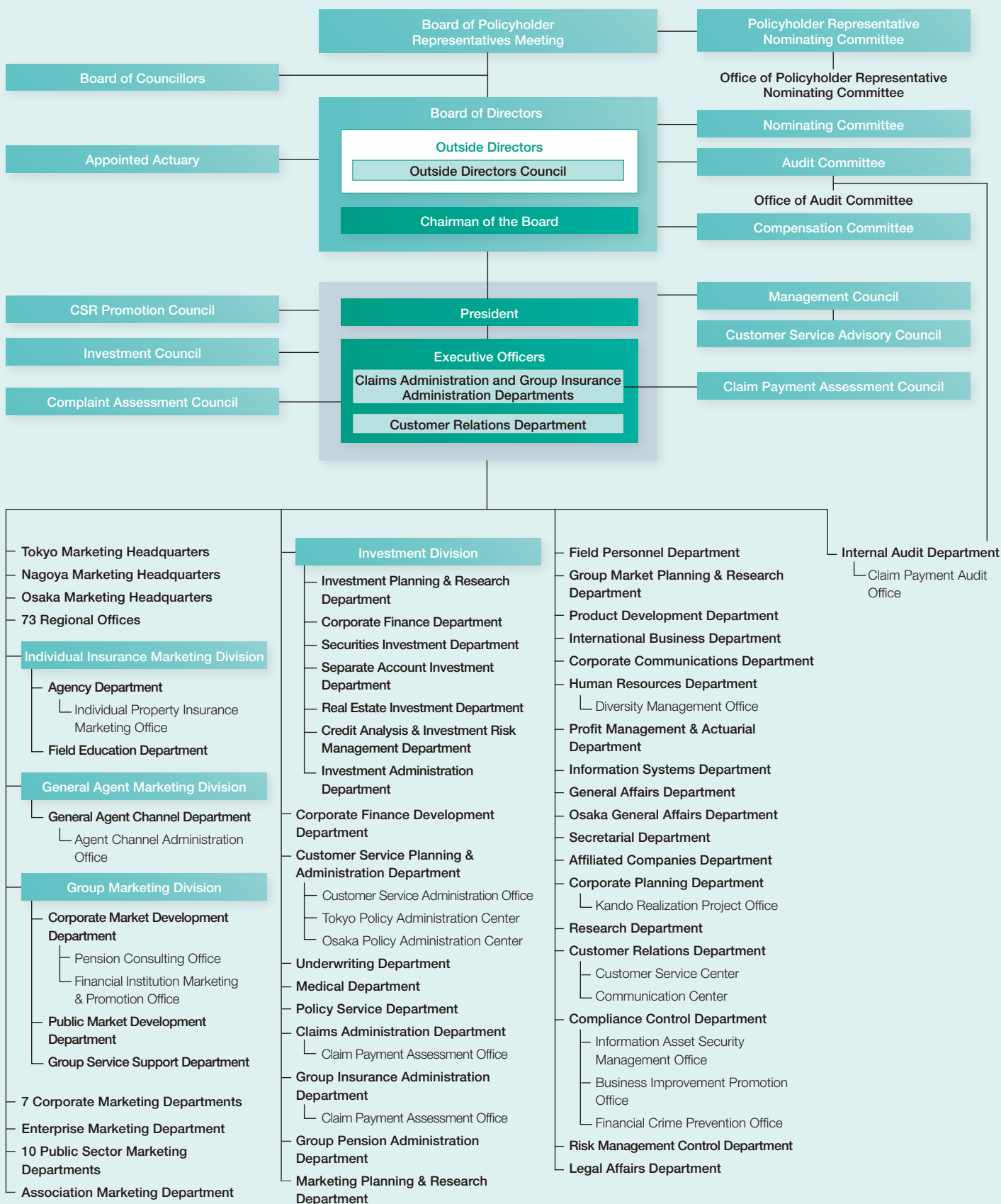
Company Information

Contents

Company Organization	42
Sources of Foundation Funds/ Status of Employees	43
Directors and Executive Officers	44
Domestic Subsidiaries, Affiliates and Others	45
Overseas Subsidiaries, Affiliates and Others	46

Company Organization

(As of July 2, 2015)



Sources of Foundation Funds/ Status of Employees

Contributors

(As of March 31, 2015)

Contributors	Size of Contribution	
	Amounts Contributed (millions of yen)	Proportion (%)
Meiji Yasuda Life 2012 Fund Special Purpose Company, Ltd.	100,000	38.46
Meiji Yasuda Life 2014 Fund Special Purpose Company, Ltd.	60,000	23.08
Meiji Yasuda Life 2011 Fund Special Purpose Company, Ltd.	50,000	19.23
Meiji Yasuda Life 2013 Fund Special Purpose Company, Ltd.	50,000	19.23

Note:

Meiji Yasuda Life 2011 Fund Special Purpose Company, Ltd., Meiji Yasuda Life 2012 Fund Special Purpose Company, Ltd., Meiji Yasuda Life 2013 Fund Special Purpose Company, Ltd. and Meiji Yasuda Life 2014 Fund Special Purpose Company, Ltd. have issued special corporate bonds, backed by claims on the funds. Proceeds from bond issuance are used to purchase claims on the funds. The Company has not made investments in any of these special purpose companies.

Status of Employees

As of and years ended March 31,	Total Employees		New Recruits		2015	
	2014	2015	2014	2015	Average age	Average length of service
Permanent staff	8,398	10,692	211	256	43 years, 8 months	15 years, 6 months
Male	4,607	4,504	100	136	43 years, 7 months	19 years, 10 months
Female	3,791	6,188	111	120	43 years, 9 months	12 years, 4 months
Sales personnel	28,731	30,101	5,526	5,839	47 years, 4 months	10 years, 6 months
Male	10	8	—	—	72 years, 0 months	40 years, 11 months
Female	28,721	30,093	5,526	5,839	47 years, 4 months	10 years, 6 months

Notes:

- In line with changes in the Company's personnel system, the scope of total employees (permanent staff) excludes the following personnel.
As of March 31, 2014:
Employees on term contracts, those seconded to external companies, those taking long-term leave and those dedicated to service for labor unions
As of March 31, 2015:
Those seconded to external companies, those taking long-term leave and those dedicated to service for labor unions
- New recruits (permanent staff) indicates the number of new employees who joined the Company immediately after graduation.
- The average length of service for sales personnel includes time spent as sales personnel under consignment contracts with the Company upon reaching age 60 or thereafter.

Directors and Executive Officers

(As of July 2, 2015)

Directors

Chairman of the Board	Nobuya Suzuki
Directors	Akio Negishi
	Hiroaki Tonooka
	Kiyotaka Fuke
	Kenji Kojo
	Shigehiko Hattori* Senior Advisor, Shimadzu Corporation
	Seiichi Ochiai* Professor Emeritus, the University of Tokyo
	Yoshihide Munekuni* A former Chairman of the Board, Honda Motor Co., Ltd.
	Teruo Kise* Senior Advisor, TOTO LTD.
	Miyako Suda* Special Advisor, The Canon Institute for Global Studies
	Keiko Kitamura* Professor, Faculty of Commerce, Chuo University

Executive Officers

	Nobuya Suzuki**
President	Akio Negishi**
Deputy Presidents	Hiroaki Tonooka
	Kiyotaka Fuke
Senior Managing Executive Officers	Katsunari Maeda Chief General Manager, Tokyo Marketing Headquarters
	Toshihiko Yamashita Chief Executive, Investment
	Takashi Ito Chief Executive, Individual Insurance Marketing
	Masahiro Ifuku
	Kikuo Asano
Managing Executive Officers	Tatsuo Ogoshi Chief Executive, General Agent Marketing
	Akio Sakai Chief Executive, Group Marketing
	Masahiko Sagara
	Shigeru Kawamoto
	Kazuhito Nakakuma Chief General Manager, Nagoya Marketing Headquarters
	Tadashi Onishi
	Masao Aratani
	Shinya Makino
	Tetsuo Maejima
Executive Officers	Takashi Tsunematsu General Manager, Agency Department
	Takashi Kikugawa Chief General Manager, Osaka Marketing Headquarters
	Yasuyuki Ayai
	Teruki Umezaki General Manager, Human Resources Department
	Kazunori Yamauchi General Manager, International Business Department
	Kazuhiko Umakoshi Deputy Chief Executive, Individual Insurance Marketing
	Satomi Matsumura General Manager, Tachikawa Regional Office
	Michihiko Hayashi General Manager, Sapporo Regional Office
	Hideki Nagashima General Manager, Corporate Planning Department
	Shinji Nakatani General Manager, Group Insurance Administration Department
	Tsuyoshi Mizuno General Manager, Affiliated Companies Department

* Outside Director

** Representative Executive Officer

Domestic Subsidiaries, Affiliates and Others

(As of March 31, 2015)

Consolidated Subsidiaries

Company name	Main business site	Capital or investment (millions of yen)	Establishment	Principal business	Proportion of voting rights held by Meiji Yasuda Life (%)	Proportion of voting rights held by Meiji Yasuda Life's subsidiaries (%)	Relationships with Meiji Yasuda Life
Meiji Yasuda General Insurance Co., Ltd.	Chiyoda-ku, Tokyo	52,000	August 8, 1996	Nonlife insurance (property and casualty)	100.0	0.0	• A tenant of a building owned by the Company
Meiji Yasuda Asset Management Company Ltd.	Minato-ku, Tokyo	1,000	November 15, 1986	Investment advisory and agency business, investment management business	92.9	0.0	• One of whose directors concurrently serves as the Company's director
Meiji Yasuda System Technology Company Limited	Koto-ku, Tokyo	100	April 1, 1982	Development, operation and management of systems; consulting service; payment collection; services related to nursing care and disease prevention	6.6	37.4	• One of whose directors concurrently serves as the Company's director • A tenant of a building owned by the Company

Others

Company name	Main business site	Capital or investment (millions of yen)	Establishment	Principal business	Proportion of voting rights held by Meiji Yasuda Life (%)	Proportion of voting rights held by Meiji Yasuda Life's subsidiaries (%)
Meiji Yasuda Insurance Service Company, Limited	Shinjuku-ku, Tokyo	30	April 5, 1984	Insurance agency	100.0	0.0
Meiji Capital 8th Investment Partnership	Chiyoda-ku, Tokyo	244 (investment)	April 8, 2005	Investment in unlisted companies and management of invested capital	—	—
Meiji Capital 9th Investment Partnership	Chiyoda-ku, Tokyo	296 (investment)	May 22, 2008	Investment in unlisted companies and management of invested capital	—	—
RP Alpha Tokutei Mokuteki Kaisha	Chuo-ku, Tokyo	15,210	August 7, 2001	Real estate and related investment	—	—
Meiji Yasuda Real Estate Management Company Limited	Shinagawa-ku, Tokyo	10	April 30, 1963	Building management	100.0	0.0
Meiji Yasuda Life Planning Center Company, Limited	Toshima-ku, Tokyo	10	November 10, 1978	Insurance-related clerical work; insurance agency; survey and research regarding life planning; consulting service	10.0	21.0
MYJ Co., Ltd.	Koto-ku, Tokyo	100	April 1, 1987	Accounting and record keeping related to policyholder services; life insurance contract confirmation; printing, book binding, packaging and distribution; insurance agency; clerical work related to employee benefit programs	100.0	0.0
Diamond Athletics, Ltd.	Minato-ku, Tokyo	50	July 1, 1983	Operation of athletic clubs	10.0	0.0
Meiji Yasuda Institute of Life and Wellness, Inc.	Chiyoda-ku, Tokyo	25	July 1, 1991	Survey, research and consulting regarding pension plans, healthcare, medical care, nursing care and life planning aimed at promoting wellness in an aging society	12.0	74.0
Sunvenus Tachikawa Company Limited	Tachikawa City, Tokyo	490	December 1, 1987	Operation of private nursing home	100.0	0.0
MST Insurance Service Co., Ltd.	Shinjuku-ku, Tokyo	1,010	October 1, 2003	Insurance agency	16.1	0.0
Yasuda Enterprise Development Co., Ltd.	Chiyoda-ku, Tokyo	100	December 17, 1996	Venture capital	50.0	0.0
The Mitsubishi Asset Brains Company, Limited	Minato-ku, Tokyo	480	December 25, 1998	Research and evaluation of investment trusts; investment advisory and agency business	25.0	0.0
Defined Contribution Plan Consulting of Japan Co., Ltd.	Chiyoda-ku, Tokyo	4,000	March 16, 2001	Operation and management of defined contribution pension plans	20.0	0.0
THE YASUDA ENTERPRISE DEVELOPMENT IV, LIMITED PARTNERSHIP	Chiyoda-ku, Tokyo	3,599 (investment)	January 31, 2008	Investment in unlisted companies and management of invested capital	—	—
KSP COMMUNITY, Inc.	Kawasaki City, Kanagawa	20	October 25, 1988	Management of Kanagawa Science Park Building	10.0	5.0
Japan Pension Service Co., Ltd.	Osaka City, Osaka	2,000	April 1, 1988	Clerical work and system development related to corporate pensions	39.7	0.0
Meiji Yasuda Life Foundation of Health and Welfare	Shinjuku-ku, Tokyo	250 (basic fund)	June 6, 1962	Assistance with research and other activities aimed at promoting health and strengthening the physical wellbeing of the general public		
Meiji Yasuda Mental Health Foundation	Toshima-ku, Tokyo	460 (basic fund)	March 26, 1965	Assistance with research aimed at addressing issues regarding social welfare; operation of consulting center; provision of training programs		
The Meiji Yasuda Cultural Foundation	Shinjuku-ku, Tokyo	1,520 (basic fund)	June 10, 1991	Fostering artists and other human resources in the field of music; the maintenance of cultural traditions, including nurturing successors, to ensure the preservation of these traditions		

Notes:

- In addition to those listed above, the Company's subsidiaries and others include THE YASUDA ENTERPRISE DEVELOPMENT RB I, LIMITED PARTNERSHIP and THE YASUDA ENTERPRISE DEVELOPMENT III, LIMITED PARTNERSHIP, both of which were under liquidation proceedings as of March 31, 2015.
- The investment amounts in Meiji Capital 8th Investment Partnership, Meiji Capital 9th Investment Partnership and THE YASUDA ENTERPRISE DEVELOPMENT IV, LIMITED PARTNERSHIP represent figures as of December 31, 2014.

Overseas Subsidiaries, Affiliates and Others

(As of March 31, 2015)

Consolidated Subsidiaries

Company name	Main business site	Capital	Establishment	Principal business	Proportion of voting rights held by Meiji Yasuda Life (%)	Proportion of voting rights held by Meiji Yasuda Life's subsidiaries (%)	Relationships with Meiji Yasuda Life
Pacific Guardian Life Insurance Company, Limited	Honolulu, Hawaii, U.S.A.	USD 6.35 million	August 3, 1961	Life and health insurance	100.0	0.0	One of whose directors concurrently serves as the Company's director
Meiji Yasuda Realty USA Incorporated	Wilmington, Delaware, U.S.A.	USD 42.66 million	August 3, 1998	Real estate investing business in U.S.A.	100.0	0.0	One of whose directors concurrently serves as the Company's director

Equity-Method Affiliates

Company name	Main business site	Capital	Establishment	Principal business	Proportion of voting rights held by Meiji Yasuda Life (%)	Proportion of voting rights held by Meiji Yasuda Life's subsidiaries (%)	Relationships with Meiji Yasuda Life
Founder Meiji Yasuda Life Insurance Co., Ltd.	Shanghai, China	CNY 1,480 million	November 28, 2002	Life insurance	29.2	0.0	Three of whose directors concurrently serves as the Company's directors
PT AVRIST Assurance	Jakarta, Indonesia	IDR 4.5 billion	May 19, 1975	Life insurance	29.9	0.0	One of whose directors concurrently serves as the Company's director
Towarzystwo Ubezpieczeń EUROPA Spółka Akcyjna (TU Europa S.A.)	Wroclaw, Poland	PLN 37.8 million	November 28, 1994	Nonlife insurance	33.5	0.0	—
Towarzystwo Ubezpieczeń i Reasekuracji WARTA Spółka Akcyjna (TUIR Warta S.A.)	Warsaw, Poland	PLN 187.938 million	September 3, 1920	Nonlife insurance	24.3	0.0	—
Thai Life Insurance Public Company Limited	Bangkok, Thailand	THB 10.6 billion	January 22, 1942	Life insurance	15.0	0.0	One of whose directors concurrently serves as the Company's director

Others

Company name	Main business site	Capital	Establishment	Principal business	Proportion of voting rights held by Meiji Yasuda Life (%)	Proportion of voting rights held by Meiji Yasuda Life's subsidiaries (%)
Meiji Yasuda America Incorporated	New York, New York, U.S.A.	USD 7 million	October 15, 1986	Financial and economic research, and customer development assistance in financing business	100.0	0.0
Meiji Yasuda Europe Limited	London, UK	GBP 4 million	August 10, 1987	Financial and economic research, and customer development assistance in financing business	100.0	0.0
Meiji Yasuda Asia Limited	Hong Kong, China	USD 3 million	December 17, 2001	Brokerage of insurance products, investment advisory, investment management, financial and economic research, customer development assistance in financing business	100.0	0.0

Notes:

1. Acquisitions of equity stakes in Pacific Guardian Life Insurance Company, Limited, Founder Meiji Yasuda Life Insurance Co., Ltd., PT AVRIST Assurance, Towarzystwo Ubezpieczeń EUROPA Spółka Akcyjna, Towarzystwo Ubezpieczeń i Reasekuracji WARTA Spółka Akcyjna and Thai Life Insurance Public Company Limited were executed in March 1976, December 2010, November 2010, June 2012, July 2012, and November 2013, respectively.

2. The status of the subsidiaries of Meiji Yasuda Life's overseas subsidiaries and affiliates follows:

- Pacific Guardian Life Insurance Company, Limited: One subsidiary (Meiji Yasuda Life's subsidiary) which completed liquidation proceedings in May 2015.
- Meiji Yasuda Realty USA Incorporated: Two subsidiaries (Meiji Yasuda Life's subsidiaries)
- PT AVRIST Assurance: Two subsidiaries (Meiji Yasuda Life's affiliates)
- Towarzystwo Ubezpieczeń EUROPA Spółka Akcyjna: Four subsidiaries (Meiji Yasuda Life's affiliates)
- Towarzystwo Ubezpieczeń i Reasekuracji WARTA Spółka Akcyjna: One subsidiary (Meiji Yasuda Life's affiliate)