

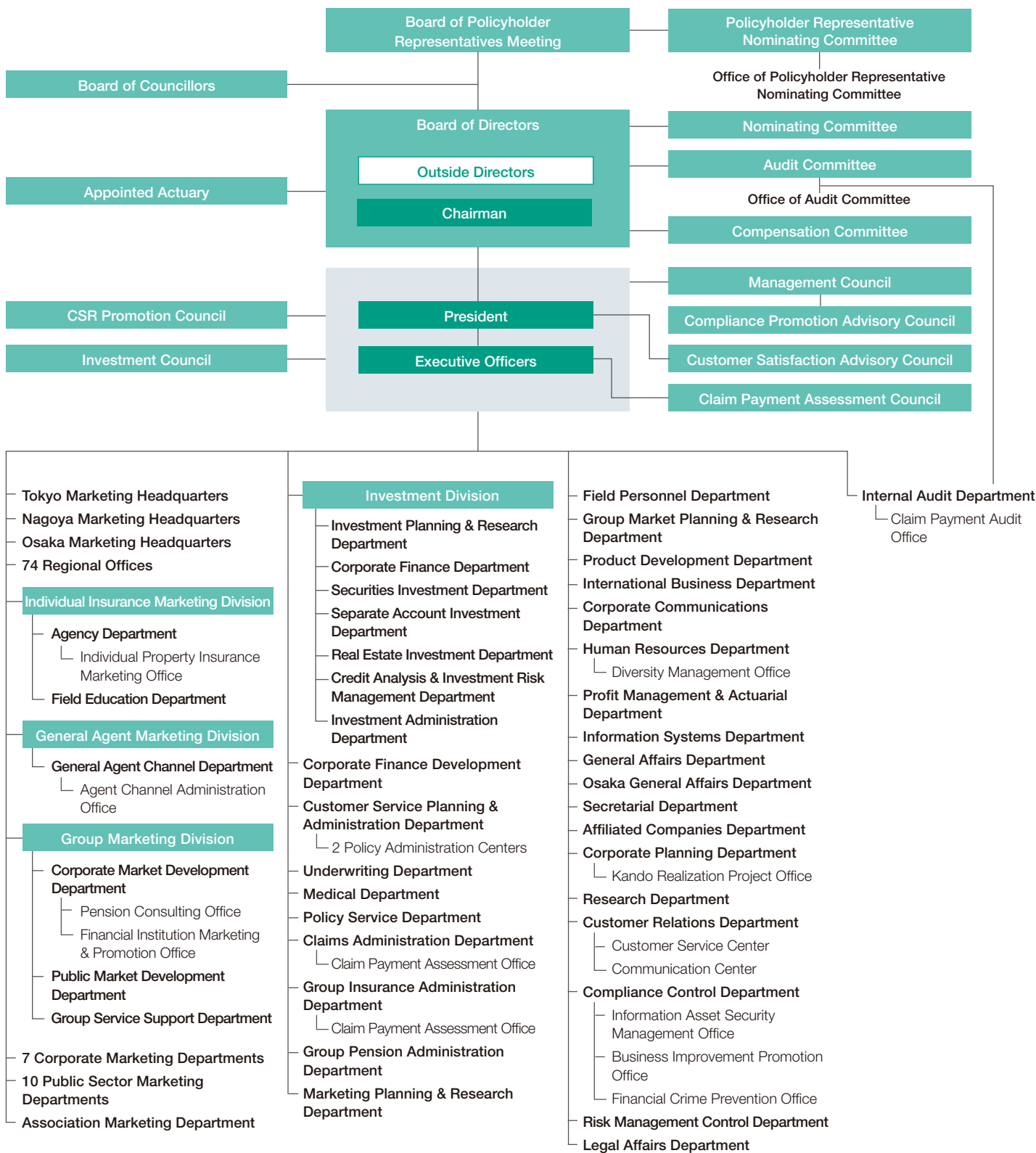
Company Information

Contents

| | |
|--|----|
| Company Organization | 34 |
| Sources of Foundation Funds/ Status of Employees | 35 |
| Directors and Executive Officers | 36 |
| Domestic Subsidiaries and Affiliates | 37 |
| Overseas Subsidiaries and Affiliates | 38 |

Company Organization

(As of July 2, 2014)



Sources of Foundation Funds/ Status of Employees

Contributors

(As of March 31, 2014)

| Contributors | Size of Contribution | |
|---|---------------------------------------|----------------|
| | Amounts Contributed (millions of yen) | Proportion (%) |
| Meiji Yasuda Life 2012 Fund Special Purpose Company, Ltd. | 100,000 | 38.46 |
| Meiji Yasuda Life 2011 Fund Special Purpose Company, Ltd. | 50,000 | 19.23 |
| Meiji Yasuda Life 2013 Fund Special Purpose Company, Ltd. | 50,000 | 19.23 |
| The Bank of Tokyo-Mitsubishi UFJ, Ltd. | 10,000 | 3.85 |
| Mizuho Bank, Ltd. | 10,000 | 3.85 |
| Mitsubishi UFJ Trust and Banking Corporation | 5,000 | 1.92 |
| The Bank of Yokohama, Ltd. | 3,000 | 1.15 |
| The Hachijuni Bank, Ltd. | 3,000 | 1.15 |
| The Shizuoka Bank, Ltd. | 3,000 | 1.15 |
| The Bank of Fukuoka, Ltd. | 3,000 | 1.15 |
| The Bank of Iwate, Ltd. | 2,000 | 0.77 |
| The 77 Bank, Ltd. | 2,000 | 0.77 |
| The Toho Bank, Ltd. | 2,000 | 0.77 |
| The Hokuetsu Bank, Ltd. | 2,000 | 0.77 |
| The Hokuriku Bank, Ltd. | 2,000 | 0.77 |
| The Hokkoku Bank, Ltd. | 2,000 | 0.77 |
| The Ogaki Kyoritsu Bank, Ltd. | 2,000 | 0.77 |
| The Yamaguchi Bank, Ltd. | 2,000 | 0.77 |
| The Shikoku Bank, Ltd. | 2,000 | 0.77 |
| The Higo Bank, Ltd. | 2,000 | 0.77 |
| Shinkin Central Bank | 2,000 | 0.77 |
| The Hiroshima Bank, Ltd. | 1,000 | 0.38 |

Notes:

- Contributors are listed in order of the amounts contributed.
- Meiji Yasuda Life 2011 Fund Special Purpose Company, Ltd., Meiji Yasuda Life 2012 Fund Special Purpose Company, Ltd. and Meiji Yasuda Life 2013 Fund Special Purpose Company, Ltd. have issued special corporate bonds, backed by claims on the funds. Proceeds from bond issuance are used to purchase claims on the funds. The Company has not made investments in any of these special purpose companies.

Status of Employees

| Category | Total Employees | | | New Recruits | | | End of FY2013 | |
|-----------------|-----------------|---------------|---------------|--------------|--------|--------|---------------------|---------------------------|
| | End of FY2011 | End of FY2012 | End of FY2013 | FY2011 | FY2012 | FY2013 | Average age | Average length of service |
| Permanent staff | 8,892 | 8,649 | 8,398 | 178 | 188 | 211 | 42 years, 0 months | 18 years, 0 months |
| Male | 4,810 | 4,689 | 4,607 | 96 | 95 | 100 | 43 years, 6 months | 19 years, 9 months |
| Female | 4,082 | 3,960 | 3,791 | 82 | 93 | 111 | 40 years, 2 months | 15 years, 9 months |
| Sales personnel | 29,284 | 28,925 | 28,731 | 4,667 | 5,165 | 5,526 | 47 years, 6 months | 10 years, 9 months |
| Male | 10 | 10 | 10 | 0 | 0 | 0 | 70 years, 10 months | 40 years, 5 months |
| Female | 29,274 | 28,915 | 28,721 | 4,667 | 5,165 | 5,526 | 47 years, 6 months | 10 years, 9 months |

Notes:

- Total employees (permanent staff) excludes those seconded to external companies, those taking long-term leave and those dedicated to service for labor unions.
- New recruits (permanent staff) indicates the number of new employees who joined the Company immediately after graduation.
- The average length of service for sales personnel for fiscal 2012 and 2013 includes time spent as sales personnel under consignment contracts with the Company upon reaching age 60 or thereafter.

Directors and Executive Officers

(As of July 2, 2014)

| Directors | |
|---|---|
| Chairman of the Board | Nobuya Suzuki |
| Directors | Akio Negishi |
| | Hiroaki Tonooka |
| | Kiyotaka Fuke |
| | Kenji Kojo |
| | Yuko Tashima* Attorney at Law |
| | Shigehiko Hattori* Chairman of the Board, Shimadzu Corporation |
| | Seiichi Ochiai* Professor of Law, Chuo Law School |
| | Yoshihide Munekuni* A former Chairman of the Board, Honda Motor Co., Ltd. |
| | Teruo Kise* Senior Advisor, TOTO LTD. |
| | Miyako Suda* Special Advisor, The Canon Institute for Global Studies |
| Executive Officers | |
| | Nobuya Suzuki** |
| President | Akio Negishi** |
| Deputy Presidents | Hiroaki Tonooka |
| | Kiyotaka Fuke |
| | Ichiro Wakasa |
| Senior Managing Executive Officers | Yasushi Wada |
| | Hiroshi Tokuoka |
| | Katsunari Maeda Chief General Manager, Tokyo Marketing Headquarters |
| | Toshihiko Yamashita Chief Executive, Investment |
| | Takashi Ito Chief Executive, Individual Insurance Marketing |
| Managing Executive Officers | Tatsuo Ogoshi Chief Executive, General Agent Marketing |
| | Hiromasa Suzuki |
| | Masahiro Ifuku |
| | Kikuo Asano |
| | Akio Sakai Chief Executive, Group Marketing |
| | Masahiko Sagara |
| | Shigeru Kawamoto |
| | Kazuhito Nakakuma Chief General Manager, Nagoya Marketing Headquarters |
| | Tadashi Onishi |
| Executive Officers | Masao Aratani |
| | Shinya Makino General Manager, Product Development Department |
| | Takashi Tsunematsu General Manager, Agency Department |
| | Tetsuo Maejima General Manager, Corporate Market Development Department |
| | Takashi Kikugawa Chief General Manager, Osaka Marketing Headquarters |
| | Yasuyuki Ayai General Manager, General Agent Channel Department |
| | Teruki Umezaki General Manager, Human Resources Department |
| | Kazunori Yamauchi General Manager, International Business Department |

* Outside Director

** Representative Executive Officer

Domestic Subsidiaries and Affiliates

(As of March 31, 2014)

| Company name | Main business site | Capital or investment (millions of yen) | Establishment | Principal business | Proportion of voting rights held by Meiji Yasuda Life (%) |
|--|-------------------------|---|-------------------|--|---|
| Meiji Yasuda General Insurance Co., Ltd.* | Chiyoda-ku, Tokyo | 52,000 | August 8, 1996 | Nonlife insurance (property and casualty) | 100.0 |
| Meiji Yasuda Insurance Service Company, Limited | Shinjuku-ku, Tokyo | 30 | April 5, 1984 | Insurance agency | 100.0 |
| Meiji Yasuda Asset Management Company Ltd.* | Minato-ku, Tokyo | 1,000 | November 15, 1986 | Investment advisory and agency business, investment management business | 92.9 |
| Meiji Capital 8th Investment Partnership | Chiyoda-ku, Tokyo | 686 (investment) | April 8, 2005 | Investment in unlisted companies and management of invested capital | — |
| Meiji Capital 9th Investment Partnership | Chiyoda-ku, Tokyo | 297 (investment) | May 22, 2008 | Investment in unlisted companies and management of invested capital | — |
| RP Alpha Tokutei Mokuteki Kaisha | Chuo-ku, Tokyo | 15,210 | August 7, 2001 | Real estate and related investment | — |
| Meiji Yasuda Real Estate Management Company Limited | Shinagawa-ku, Tokyo | 10 | April 30, 1963 | Building management | 100.0 |
| Meiji Yasuda Life Planning Center Company, Limited | Toshima-ku, Tokyo | 10 | November 10, 1978 | Insurance-related clerical work; insurance agency; survey and research regarding life planning; consulting service | 10.0 |
| Meiji Yasuda System Technology Company Limited* | Koto-ku, Tokyo | 100 | April 1, 1982 | Development, operation and management of systems; consulting service; payment collection; services related to nursing care and disease prevention | 6.6 |
| MYJ Co., Ltd. | Koto-ku, Tokyo | 100 | April 1, 1987 | Accounting and record keeping related to policyholder services; life insurance contract confirmation; printing, book binding, packaging and distribution; insurance agency; clerical work related to employee benefit programs | 100.0 |
| Diamond Athletics, Ltd. | Minato-ku, Tokyo | 50 | July 1, 1983 | Operation of athletic clubs | 10.0 |
| Meiji Yasuda Institute of Life and Wellness, Inc. | Chiyoda-ku, Tokyo | 25 | July 1, 1991 | Survey, research and consulting regarding pension plans, healthcare, medical care, nursing care and life planning aimed at promoting wellness in an aging society | 12.0 |
| Sunvenus Tachikawa Company Limited | Tachikawa City, Tokyo | 490 | December 1, 1987 | Operation of private nursing home | 100.0 |
| MST Insurance Service Co., Ltd. | Shinjuku-ku, Tokyo | 1,010 | October 1, 2003 | Insurance agency | 16.1 |
| Yasuda Enterprise Development Co., Ltd. | Chiyoda-ku, Tokyo | 400 | December 17, 1996 | Venture capital | 50.0 |
| The Mitsubishi Asset Brains Company, Limited | Minato-ku, Tokyo | 480 | December 25, 1998 | Research and evaluation of investment trusts; investment advisory and agency business | 25.0 |
| Defined Contribution Plan Consulting of Japan Co., Ltd. | Chiyoda-ku, Tokyo | 4,000 | March 16, 2001 | Operation and management of defined contribution pension plans | 20.0 |
| THE YASUDA ENTERPRISE DEVELOPMENT III, LIMITED PARTNERSHIP | Chiyoda-ku, Tokyo | 980 (investment) | May 31, 2005 | Investment in unlisted companies and management of invested capital | — |
| THE YASUDA ENTERPRISE DEVELOPMENT IV, LIMITED PARTNERSHIP | Chiyoda-ku, Tokyo | 5,112 (investment) | January 31, 2008 | Investment in unlisted companies and management of invested capital | — |
| KSP COMMUNITY, Inc. | Kawasaki City, Kanagawa | 20 | October 25, 1988 | Management of Kanagawa Science Park Building | 10.0 |
| Japan Pension Service Co., Ltd. | Osaka City, Osaka | 2,000 | April 1, 1988 | Clerical work and system development related to corporate pensions | 39.7 |
| Meiji Yasuda Life Foundation of Health and Welfare | Shinjuku-ku, Tokyo | 250 (basic fund) | June 6, 1962 | Assistance with research and other activities aimed at promoting health and strengthening the physical wellbeing of the general public | |
| Meiji Yasuda Mental Health Foundation | Toshima-ku, Tokyo | 460 (basic fund) | March 26, 1965 | Assistance with research aimed at addressing issues regarding social welfare; operation of consulting center; provision of training programs | |
| The Meiji Yasuda Cultural Foundation | Shinjuku-ku, Tokyo | 1,520 (basic fund) | June 10, 1991 | Fostering artists and other human resources in the field of music; the maintenance of cultural traditions, including nurturing successors, to ensure the preservation of these traditions | |

* Consolidated subsidiaries as of March 31, 2014

Notes:

- In addition to those listed above, the Company's subsidiaries and affiliates include THE YASUDA ENTERPRISE DEVELOPMENT RB I, LIMITED PARTNERSHIP, which was under liquidation proceedings as of March 31, 2014.
- The investment amounts in Meiji Capital 8th Investment Partnership, Meiji Capital 9th Investment Partnership, THE YASUDA ENTERPRISE DEVELOPMENT III, LIMITED PARTNERSHIP and THE YASUDA ENTERPRISE DEVELOPMENT IV, LIMITED PARTNERSHIP represent figures as of December 31, 2013.

Overseas Subsidiaries and Affiliates

(As of March 31, 2014)

| Company name | Main business site | Capital | Establishment | Principal business | Proportion of voting rights held by Meiji Yasuda Life (%) |
|---|------------------------------|---------------------|-------------------|---|---|
| Pacific Guardian Life Insurance Company, Limited* | Honolulu, Hawaii, U.S.A. | USD 6.35 million | August 3, 1961 | Life and health insurance | 100.0 |
| Meiji Yasuda America Incorporated | New York, New York, U.S.A. | USD 7 million | October 15, 1986 | Brokerage of insurance products, customer development assistance in financing business, financial and economic research | 100.0 |
| Meiji Yasuda Europe Limited | London, UK | GBP 4 million | August 10, 1987 | Financial and economic research and customer development assistance in financing business | 100.0 |
| Meiji Yasuda Asia Limited | Hong Kong, China | USD 3 million | December 17, 2001 | Brokerage of insurance products, investment advisory, investment management, financial and economic research, customer development assistance in financing business | 100.0 |
| Meiji Yasuda Realty USA Incorporated* | Wilmington, Delaware, U.S.A. | USD 42.66 million | August 3, 1998 | Real estate investing business in U.S.A. | 100.0 |
| Founder Meiji Yasuda Life Insurance Co., Ltd.** | Shanghai, China | CNY 1,180 million | November 28, 2002 | Life insurance | 29.2 |
| PT AVRIST Assurance** | Jakarta, Indonesia | IDR 4.5 billion | May 19, 1975 | Life insurance | 23.0 |
| Towarzystwo Ubezpieczeń EUROPA Spółka Akcyjna (TU Europa S.A.)** | Wroclaw, Poland | PLN 37.8 million | November 28, 1994 | Nonlife insurance | 33.5 |
| Towarzystwo Ubezpieczeń i Reasekuracji WARTA Spółka Akcyjna (TUIR Warta S.A.)** | Warsaw, Poland | PLN 187.938 million | September 3, 1920 | Nonlife insurance | 24.3 |
| Thai Life Insurance Public Company Limited** | Bangkok, Thailand | THB 10.6 billion | January 22, 1942 | Life insurance | 15.0 |

* Consolidated subsidiaries as of March 31, 2014

** Equity-method affiliates as of March 31, 2014

Notes:

- Acquisitions of equity stakes in Pacific Guardian Life Insurance Company, Limited, Founder Meiji Yasuda Life Insurance Co., Ltd., PT AVRIST Assurance, Towarzystwo Ubezpieczeń EUROPA Spółka Akcyjna, Towarzystwo Ubezpieczeń i Reasekuracji WARTA Spółka Akcyjna and Thai Life Insurance Public Company Limited were executed in March 1976, December 2010, November 2010, June 2012, July 2012, and November 2013, respectively.
- The status of the subsidiaries of Meiji Yasuda Life's overseas subsidiaries and affiliates follows:
 - Pacific Guardian Life Insurance Company, Limited: One subsidiary (Meiji Yasuda Life's subsidiary; under liquidation proceedings as of March 31, 2014)
 - Meiji Yasuda Realty USA Incorporated: Two subsidiaries (Meiji Yasuda Life's subsidiaries)
 - PT AVRIST Assurance: Two subsidiaries (Meiji Yasuda Life's affiliates)
 - Towarzystwo Ubezpieczeń EUROPA Spółka Akcyjna: Four subsidiaries (Meiji Yasuda Life's affiliates)
 - Towarzystwo Ubezpieczeń i Reasekuracji WARTA Spółka Akcyjna: One subsidiary (Meiji Yasuda Life's affiliate)