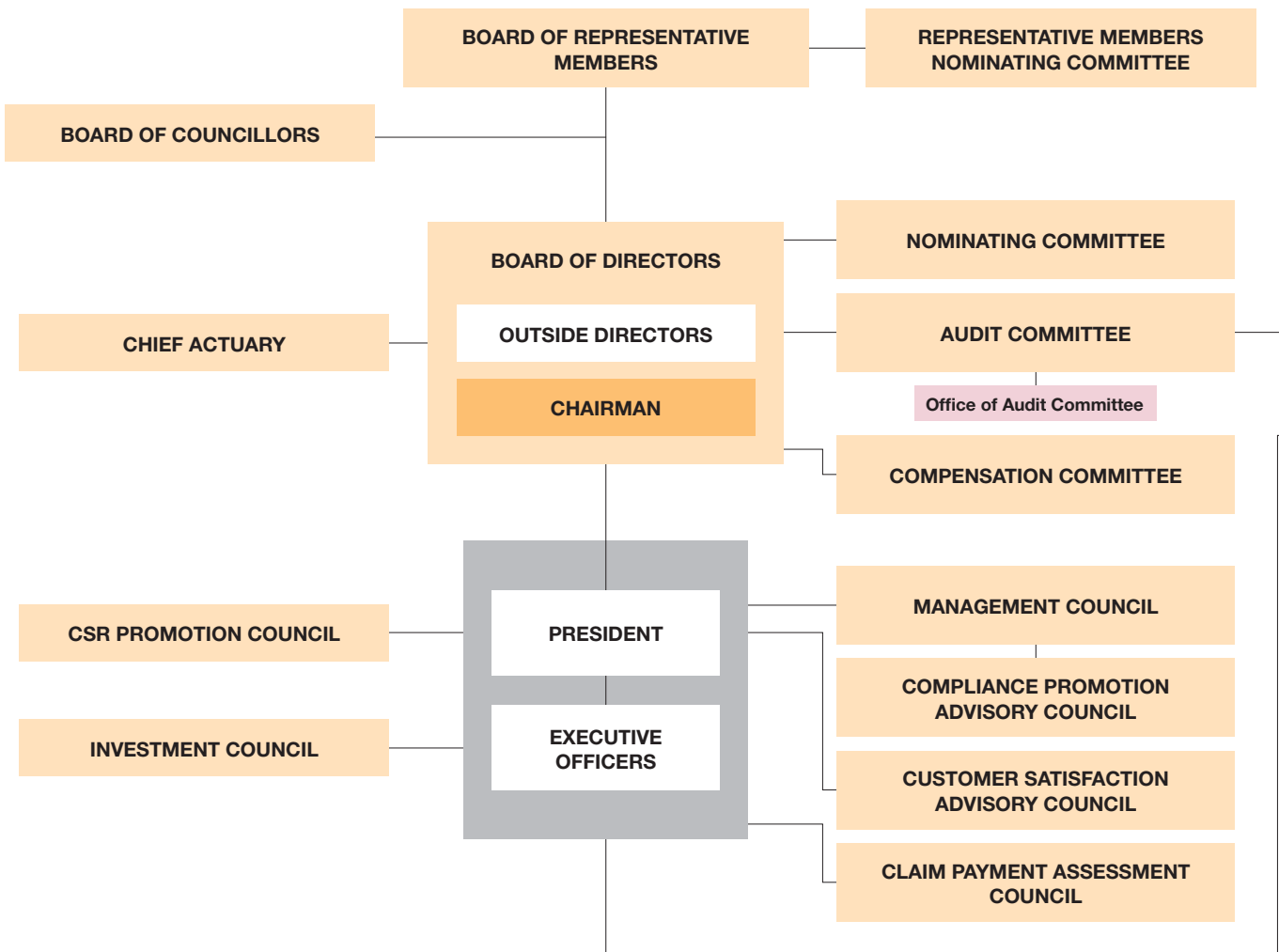


Company Organization

As of July 3, 2012



The “Company-with-Committees” System

Meiji Yasuda Life has adopted the “Company-with-Committees” system to strengthen its management supervision functions and increase transparency.

The system enhances corporate governance by making a clear institutional separation between management supervision functions and executive functions. It also promotes greater transparency in

management by increasing the number of outside directors and placing them in the majority.

The Nominating, Audit, and Compensation Committees are each comprised of a majority of outside directors selected by a vote of the Board of Directors.

As of August 31, 2012

Nominating Committee	Audit Committee	Compensation Committee
<ul style="list-style-type: none"> ○ Yuko Tashima* Shigehiko Hattori* Seichi Ochiai* Ken-ichi Sekiguchi Kenji Matsuo 	<ul style="list-style-type: none"> ○ Saburo Horiuchi* Seichi Ochiai* Yoshio Maekawa 	<ul style="list-style-type: none"> ○ Keiji Aritomi* Saburo Horiuchi* Yuko Tashima* Ken-ichi Sekiguchi Kenji Matsuo

○ Chairman of the Committee
* Outside Director

