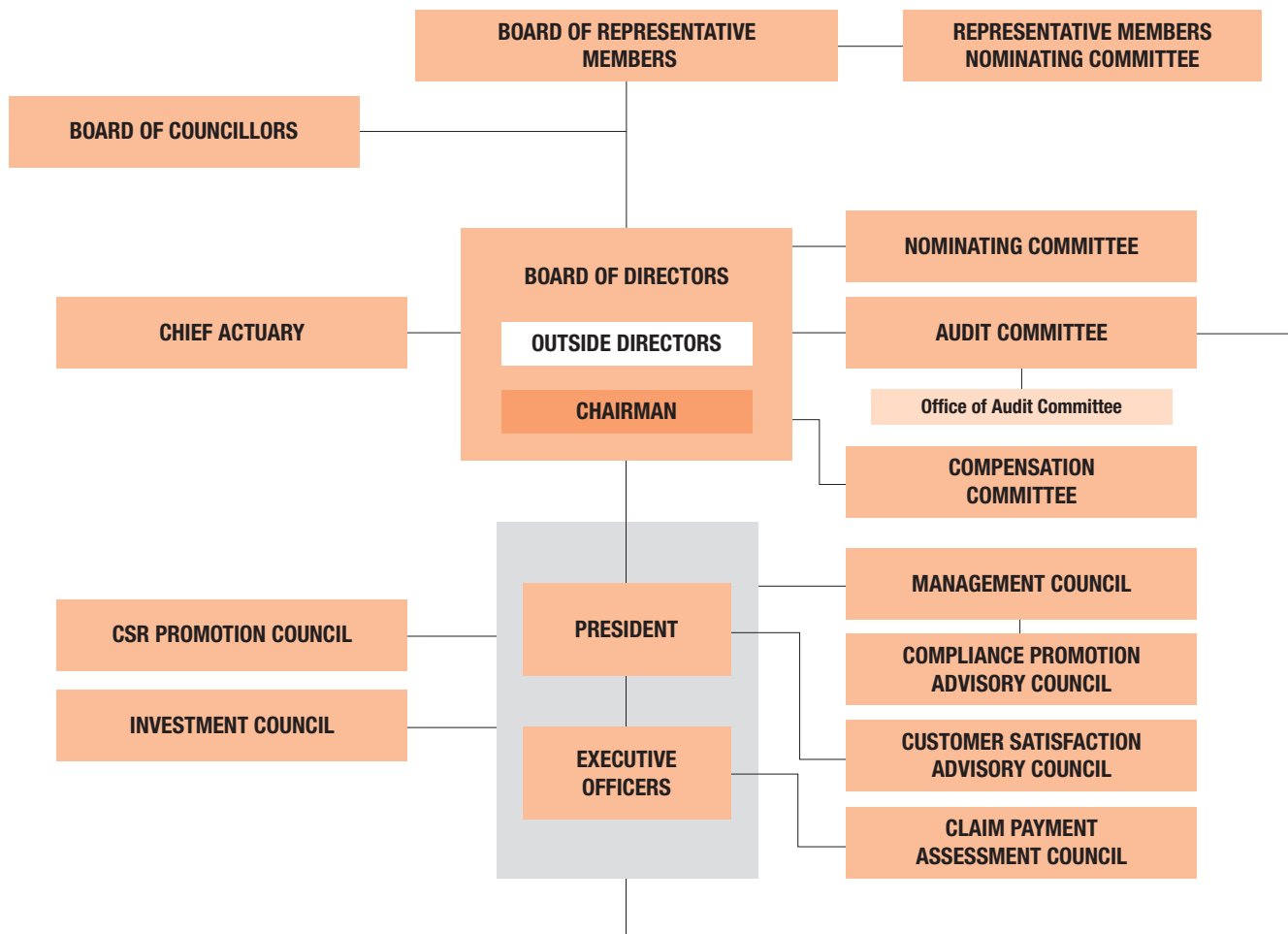


Company Organization



The “Company-with-Committees” System

Meiji Yasuda Life is adopting the “Company-with-Committees” system to strengthen its management supervision functions and increase transparency.

The system enhances corporate governance by making a clear institutional separation between management supervision functions and executive functions. It also promotes greater transparency in management by

increasing the number of outside directors and putting them in the majority.

The Nominating, Audit, and Compensation Committees comprise three or more directors—a majority of them outside—selected by decision of the Board of Directors.

Nominating Committee	Audit Committee	Compensation Committee
◎ Yuzaburo Mogi ※ Tetsuro Kitao ※ Yuko Tashima ※ Ken-ichi Sekiguchi Kenji Matsuo	◎ Tetsuro Kitao ※ Saburo Horiuchi ※ Takuma Otoshi ※ Yoshio Maekawa	◎ Keiji Aritomi ※ Saburo Horiuchi ※ Yuko Tashima ※ Ken-ichi Sekiguchi Kenji Matsuo

◎ Chairman of the Committee
 ※ Outside Director

